



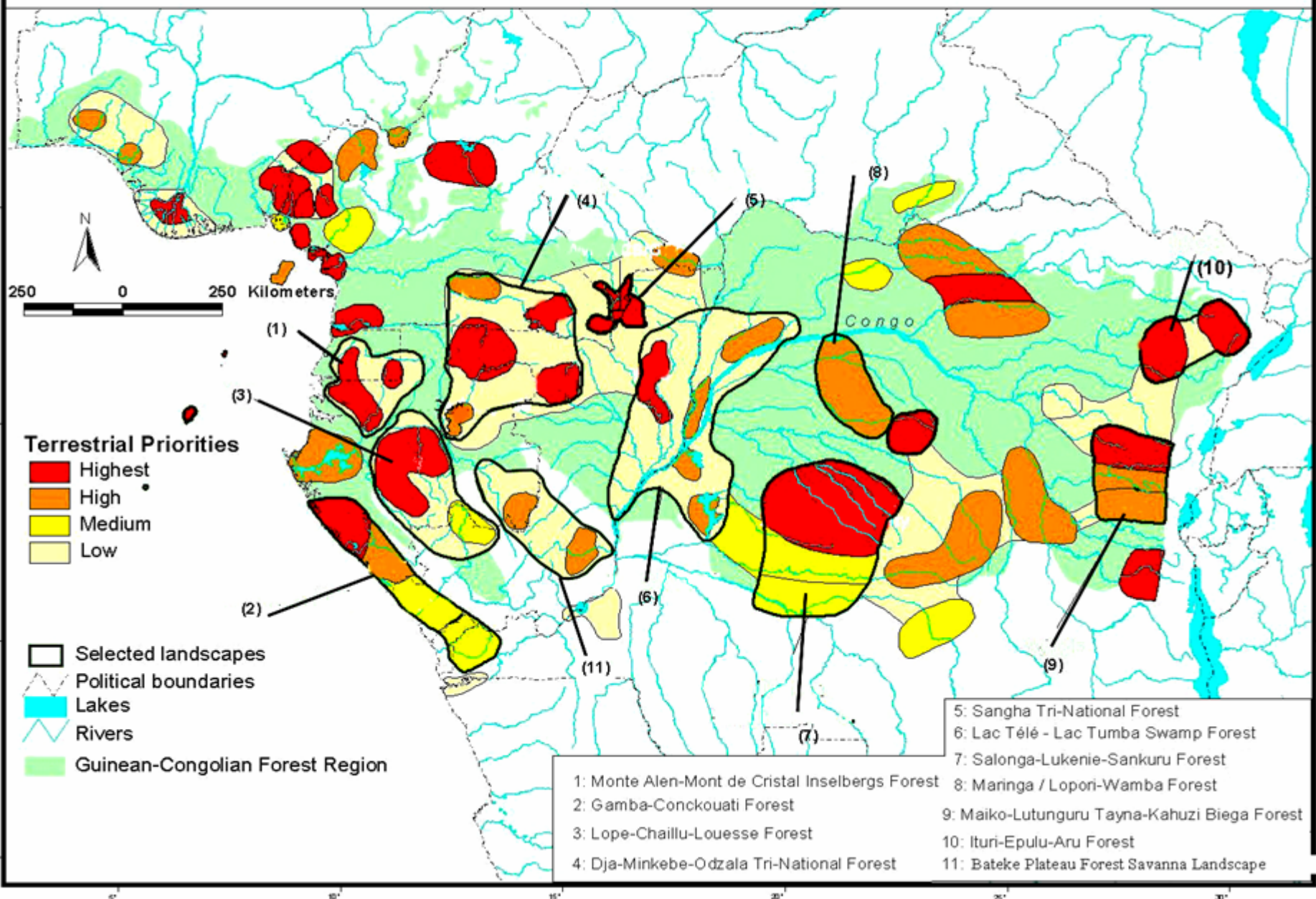
# WCS Financial Commitments To CBFP

Dr. James C. Deutsch  
Director, Africa Program  
CBFP Meeting, Paris, 22 June 2006

# WCS Commitments to CBFP

- Where are we investing?
- What activities are we supporting?
- Investment 2003-2006
- Commitment 2006-2010

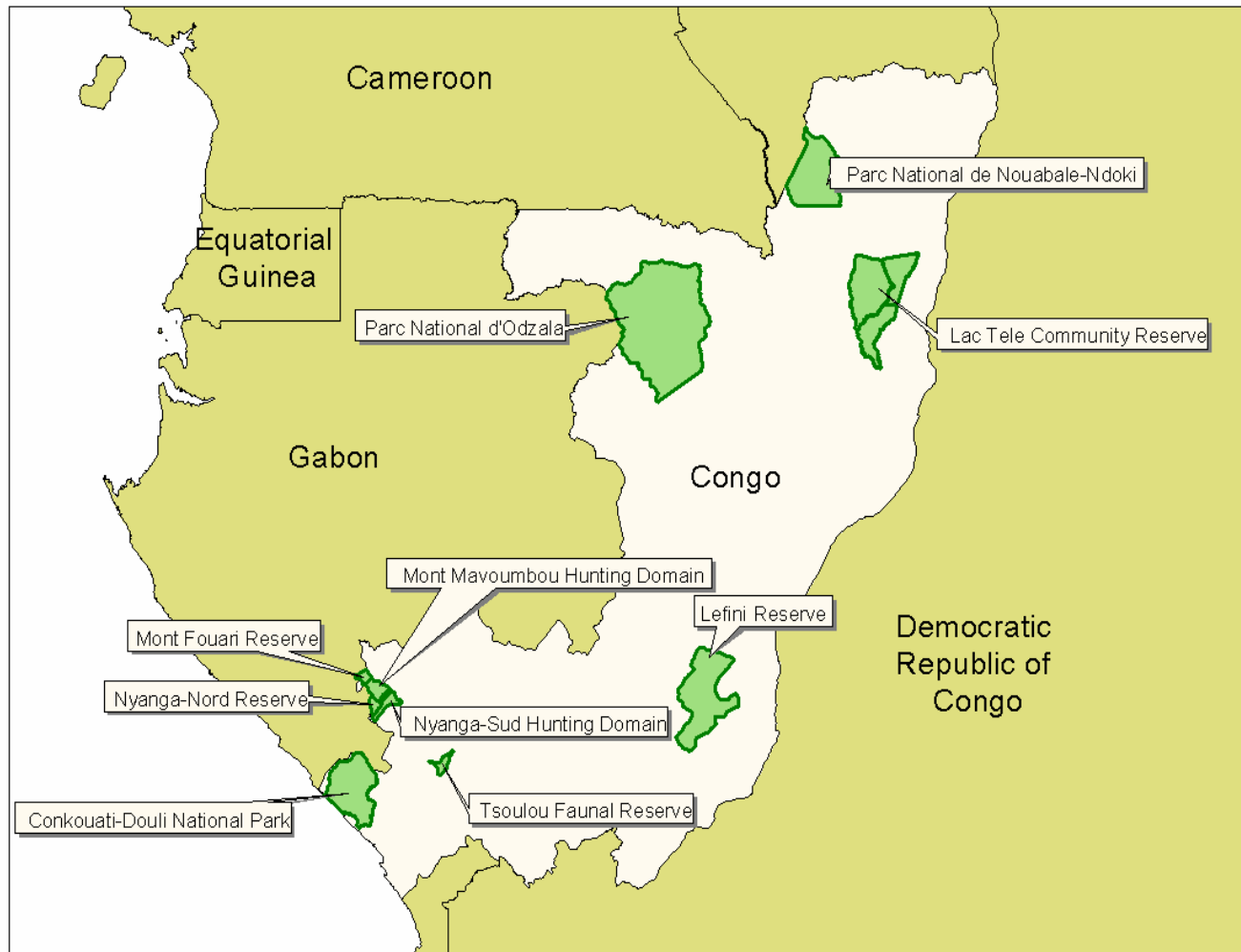
# The Congo Basin Initiative Landscape Priority focus for intervention





# Gabon





## Protected areas of Congo

0 100 200 300 Kilometers





# Democratic Republic of Congo





Protected Areas





CBNRM Zones



# Extractive Zones





# Capacity Building



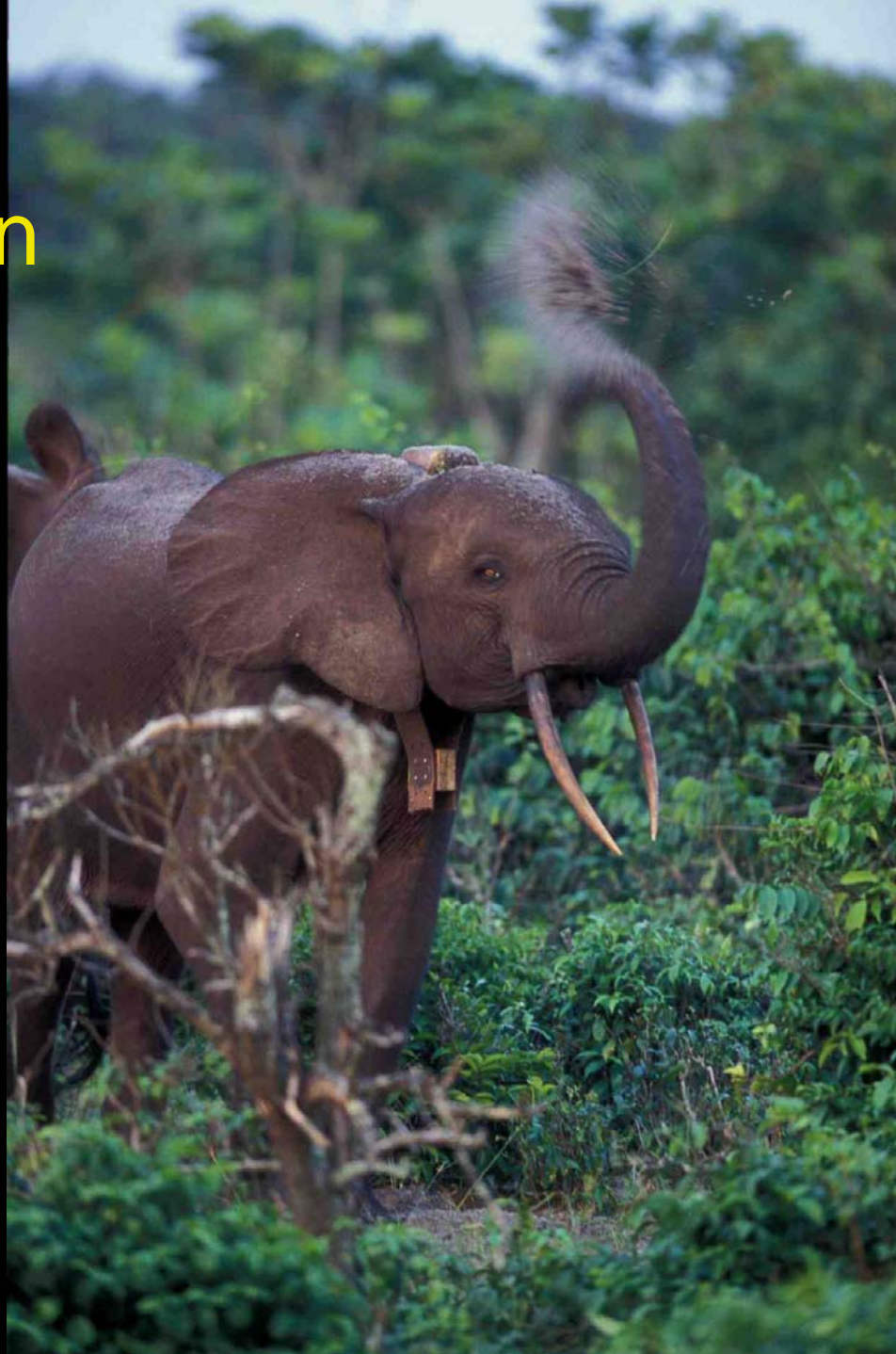


# Park & Landscape Planning & Development





# Scientific Information



# WCS Investment in CBFP 2003-2006

(\$ millions)

	Gabon	R. Congo	D.R. Congo	Total
USAID CARPE	5.2	5.6	2.7	<b>13.5</b>
Other Agencies	2.3	2.1	0.8	<b>5.2</b>
Private Funds	6.4	1.6	1.4	<b>9.4</b>
<b>Total</b>	<b>13.9</b>	<b>9.3</b>	<b>4.9</b>	<b>28.1</b>

Additional contributions include:

- Leveraged funds (e.g. GEF mobilization in Gabon & DRC)
- Work outside CBFP landscapes in Cameroon & Rwanda



WCS Commitment to CBFP  
2006-2010

> \$30 million



An aerial photograph of a vast, dense forest covering rolling hills. In the center, a valley is filled with mist or low clouds, which are illuminated from above by a bright, low sun, creating a golden glow. A river or stream winds through the valley, its surface reflecting the intense light. The foreground is dominated by the dark, textured canopy of the forest.

Thank you for your continuing partnership!