

# Community engagement, research, education and outreach for conservation in the Ebo Forest: Cameroon's newest National Park?

Ekwoke Abwe

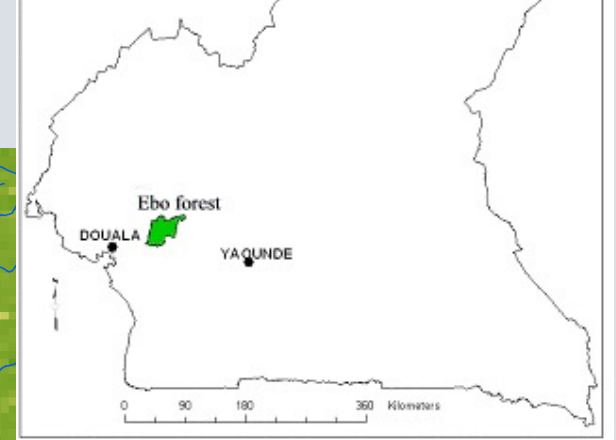
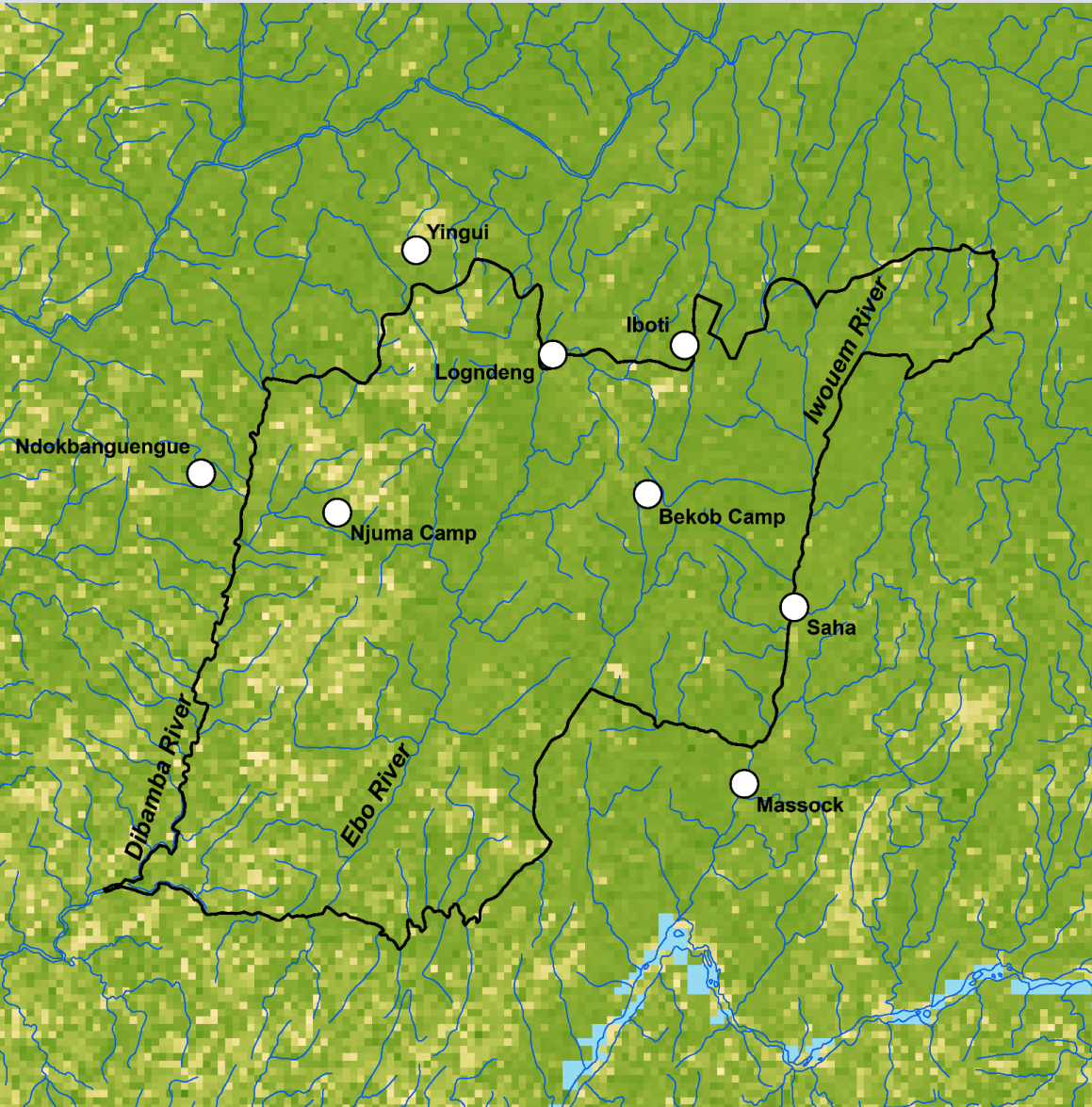
San Diego Zoo Global/Ebo Forest Research Project



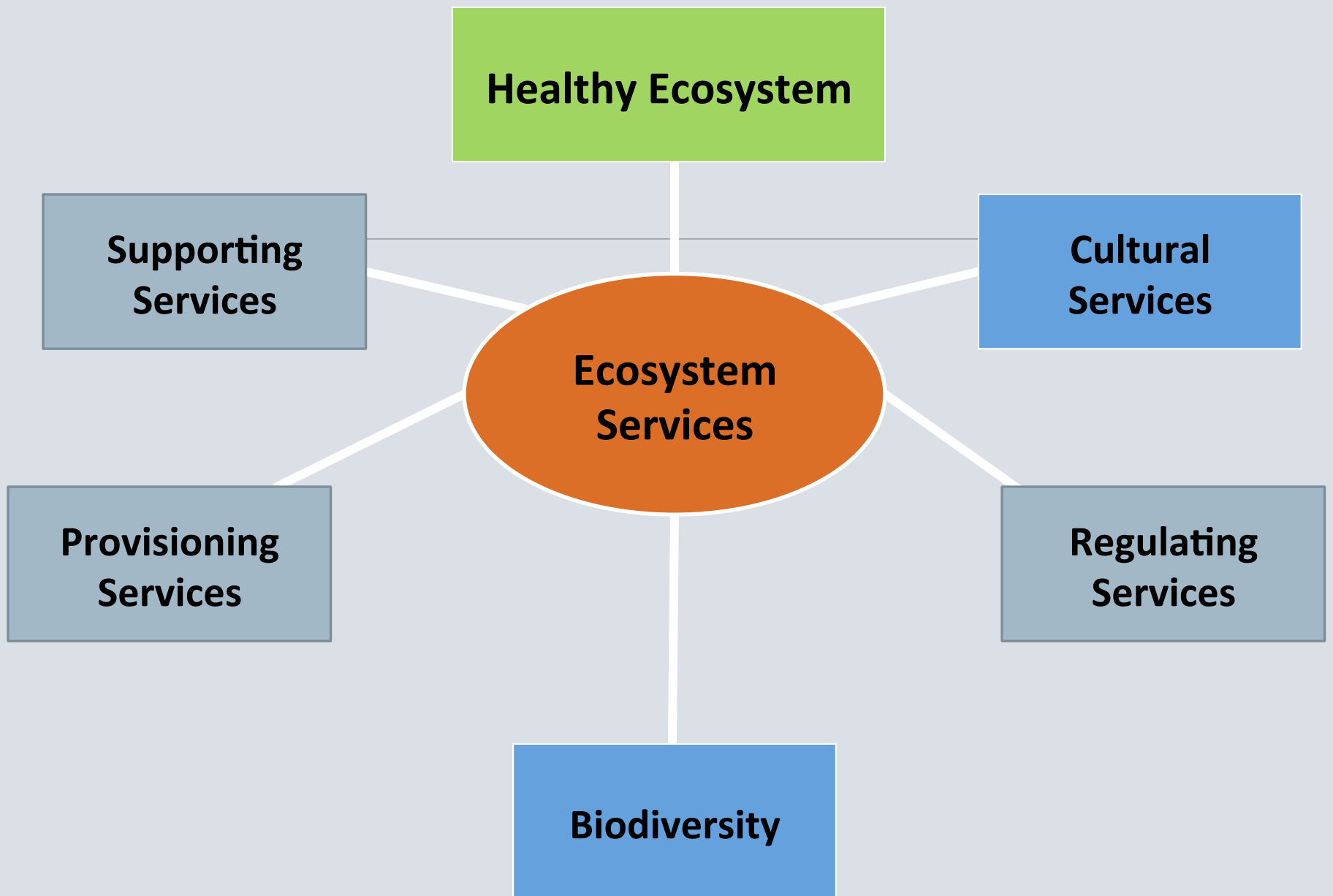
**Drexel**  
Central Africa Programs



# Ebo Forest



- Gorillas of uncertain taxonomic affinity
- Healthy population of chimpanzees and drills
- 11 diurnal primate species including
- Nut cracking chimps
- Preuss's red colobus
- Grassroots support for conservation
- Goal: Ebo National Park Creation



---

# Cultural Services Community Engagement



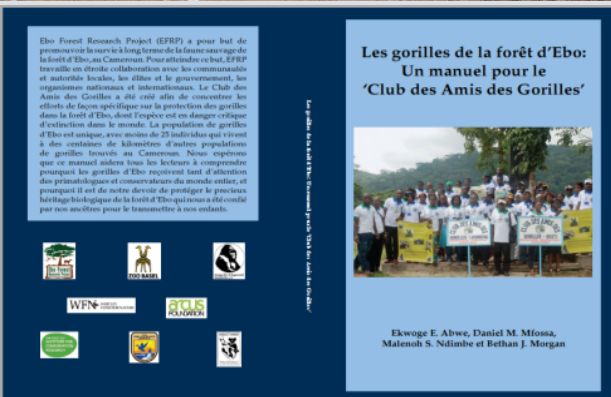


# Success of Grassroots support for biodiversity conservation and Ebo National Park creation





# Grassroots support for biodiversity conservation and Ebo National Park creation



## Club des Amis des Gorilles (CAG)

- Voluntary membership, recognized by administration
- More than 200 members in three villages
- Gorilla and large mammals monitoring by CAG members
- Recognition of outstanding CAG members by Mayor
- Community sensitization
- Hunters and school education
- Alternative sustainable livelihoods
- Showcase for research and education





# Conservation outreach and livelihood activities

1. Training hunters at Limbe Wildlife Center
2. Teachers' training workshop
3. Sustainable alternative livelihood projects



# Research and Conservation Work in Ebo Forest

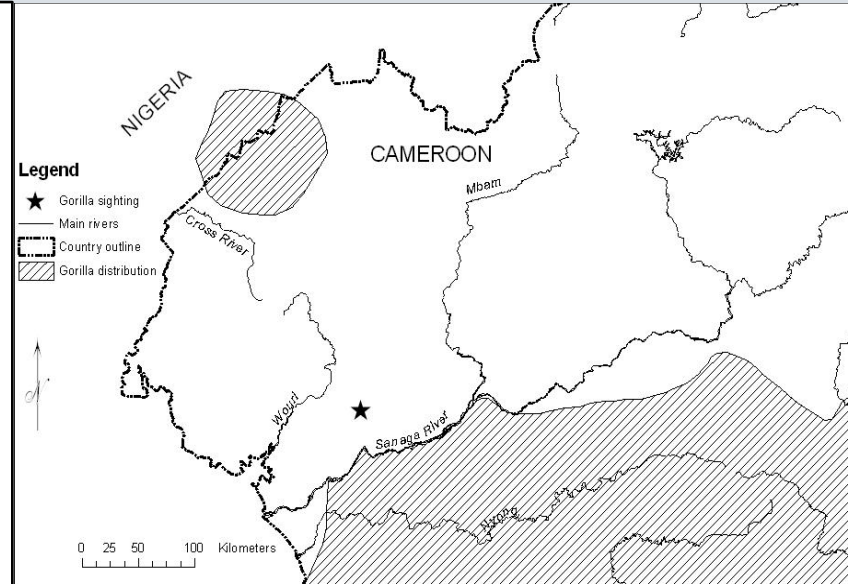
*International Journal of Primatology, Vol. 24, No. 5, October 2003 (© 2003)*



## Newly Discovered Gorilla Population in the Ebo Forest, Littoral Province, Cameroon

Bethan J. Morgan,<sup>1,3</sup> Chris Wild,<sup>1</sup> and Atanga Ekobo<sup>2</sup>

*Received February 10, 2003; accepted March 3, 2003*



**Current Biology** Vol 16 No 16  
R632

ago [12]; however, the standard error is 65,000 years at these sample sizes.

The MLS sequence documents a greater diversity among the European Neandertals than previously estimated. In particular, the MLS and MEZ sequences appear separated from a cluster of sequences from Germany and Croatia. All sequences in the cluster share two derived alleles, 16078G and 16154C. The analysis of

- diversity in recent human evolution. *Am. J. Phys. Anthropol. Suppl.* 27, 137–176.
4. Schmitz, R.W., Serre, D., Bonani, G., Feine, S., Hillgruber, F., Krainitzki, H., Pääbo, S., and Smith, F.H. (2002). The Neandertal type site revisited; interdisciplinary investigations of skeletal remains from the Neander Valley, Germany. *Proc. Natl. Acad. Sci. USA* 99, 13342–13347.
  5. Mellars, P. (2004). Neanderthals and the modern human colonization of Europe. *Nature* 432, 461–465.
  6. Caramelli, D., Lalueza-Fox, C., Vernesi, C., Lari, M., Casoli, A., Mallegni, F., Chiarelli, B., Dupanloup, I., Bertranpetit, J., Barbujani, G., *et al.* (2003). Evidence for a genetic discontinuity between Neandertals and 24,000-year-old anatomically modern Europeans. *Proc.*

## Chimpanzees use stone hammers in Cameroon

Bethan J. Morgan<sup>1,2</sup> and Ekwoje E. Abwe<sup>2</sup>

All studied chimpanzee populations use tools, with differences in behavioural repertoires between populations

Healthiest population of Nigeria-Cameroon chimpanzees, with more than 700 individuals



# Other important vertebrates

The forest harbors the only other population of the Critically Endangered Preuss's red colobus

The drill population of Ebo is the healthiest for the species that is threatened across its range

A preliminary checklist of 160 species of birds from ongoing ornithological inventories

Herpetologists from Berlin Museum and University of Buea have been surveying for frogs across the forest



# Botanical Inventories



Dr. Cheek – Kew  
Gardens, UK botanist  
in Ebo forest, 2005



2013 National Herbarium  
and Royal Botanical  
Gardens expedition in Ebo

1. *Palisota ebo*
2. *Ardisia ebo*
3. *Talbotiella ebo*
4. *Gilbertiodendron ebo*



Dr. Tchiengue,  
botanist at National  
Herbarium Yaoundé  
at Ebo forest, 2005



# Ebo forest – showcase for biodiversity research



UNIVERSITY OF  
STIRLING





# Employment and building local capacity



1. Camera trapping and other remote sensing devices
2. Research facilities for education and conservation
3. Ebo forest-wide elephant and large mammal surveys
4. Training of traditional rulers on Cameroon Wildlife Law





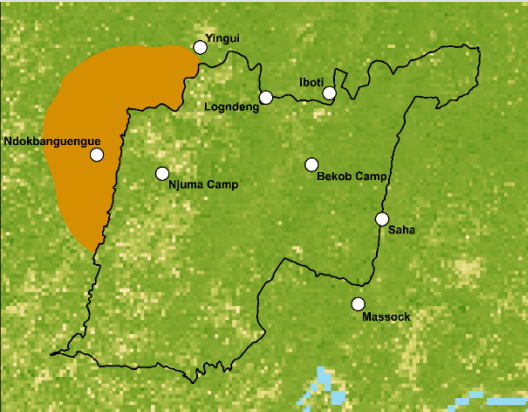
# Community resource base

- Food and especially animal protein source
- Source of fresh clean water
- Source of building materials
- Deep spiritual value for the Banen tribe
  - Site for ancestral graves and groves





# Effects of over-exploitation



- Habitat loss and fragmentation
- Species population size and range decline
- Local extinctions
- Food security in local communities – unequal distribution of benefits



# **conserving biodiversity for the service of present and future generations**

---

- Resource base for benefit of local communities and beyond
- Potential for potable water for Douala and other large cities
- Showcase for biodiversity research and conservation
- Potential for ecotourism
- Other ecosystem services

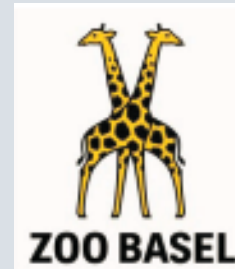


# The Ebo National Park – conserving biodiversity for the service of present and future generations





# Our supporters...



## Offield Family Foundation

# Our collaborators

The Government of Cameroon

Ministere des Forets et Faune (MINFOF)

Ministere de l'environnement (MINEP)

Ministere des Recherche Scientifique et de l'Innovation  
(MINRESI)

Herbier National de Cameroun



WWF

WCS

Limbe Wildlife Centre (Pandrillus Foundation)

Royal Botanic Gardens, Kew

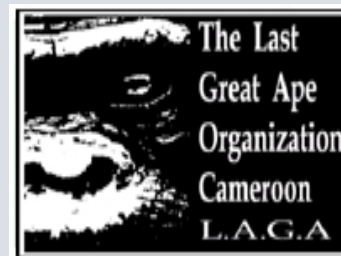
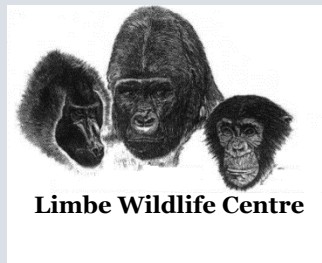
Last Great Ape Organization

Drexel University

University of Melbourne

Smithsonian

CIFOR



Thank you  
?

