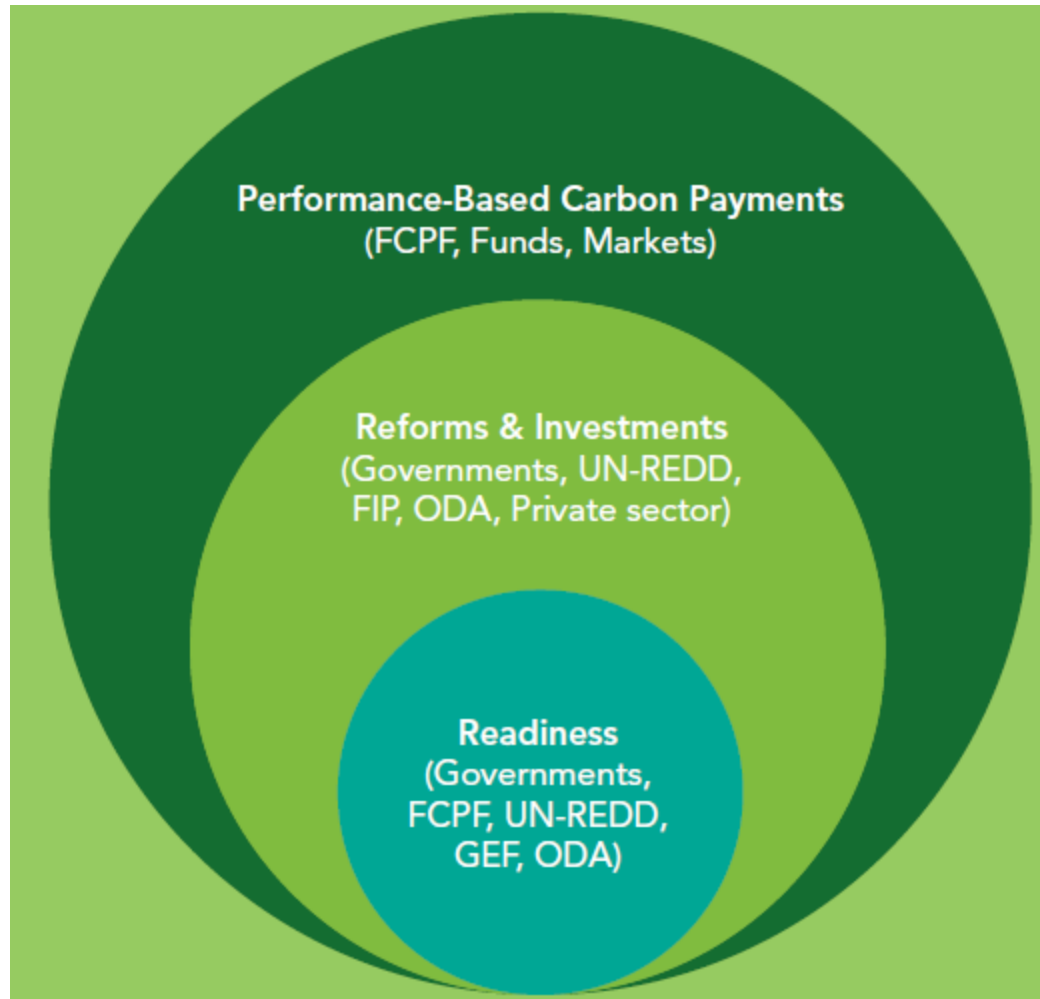


# World Bank-supported REDD+ Initiatives

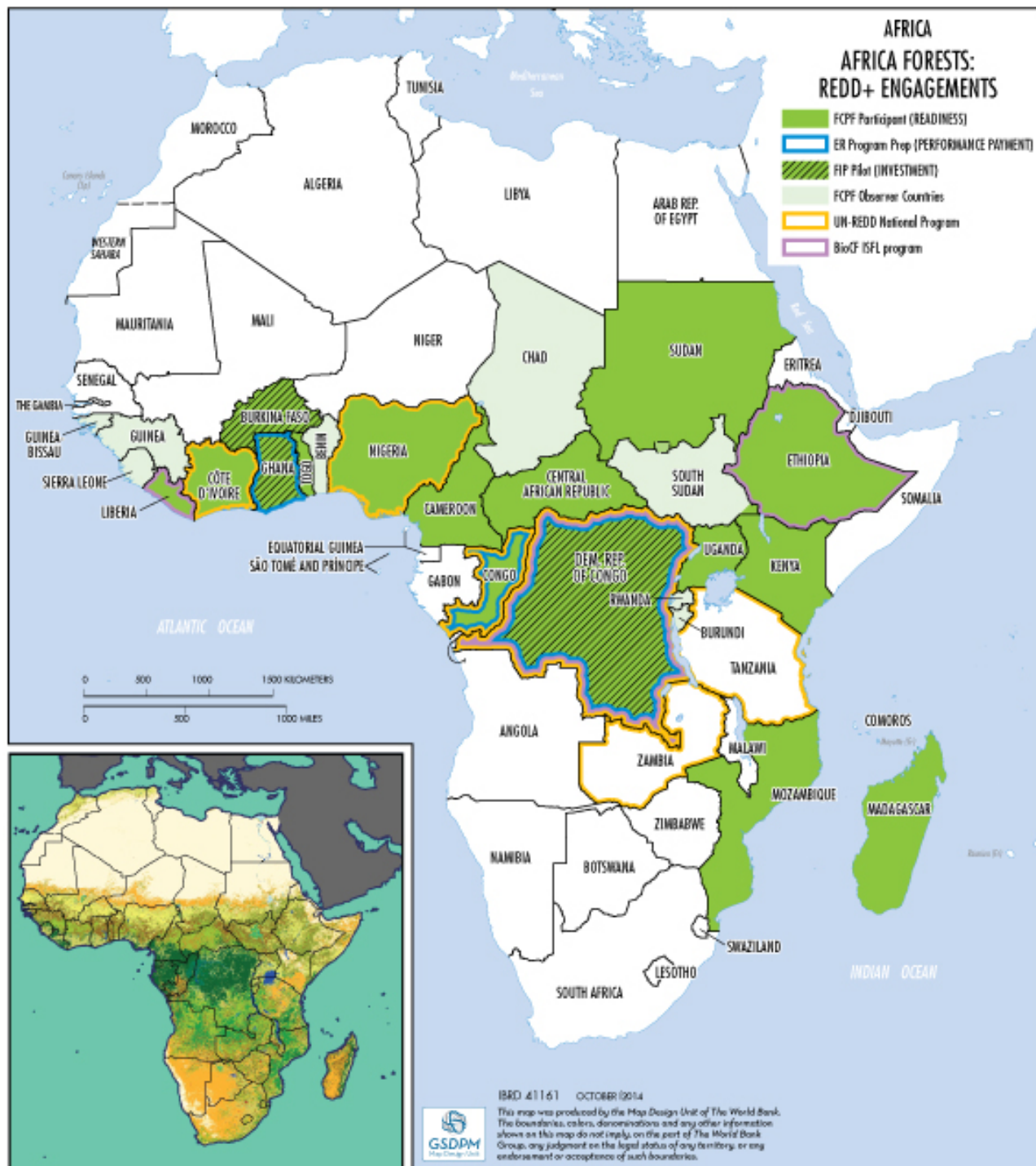
**Laurent Valiergue**

**Congo Basin Forest Partnership Anchor Conference  
Brazzaville, October 8, 2014**

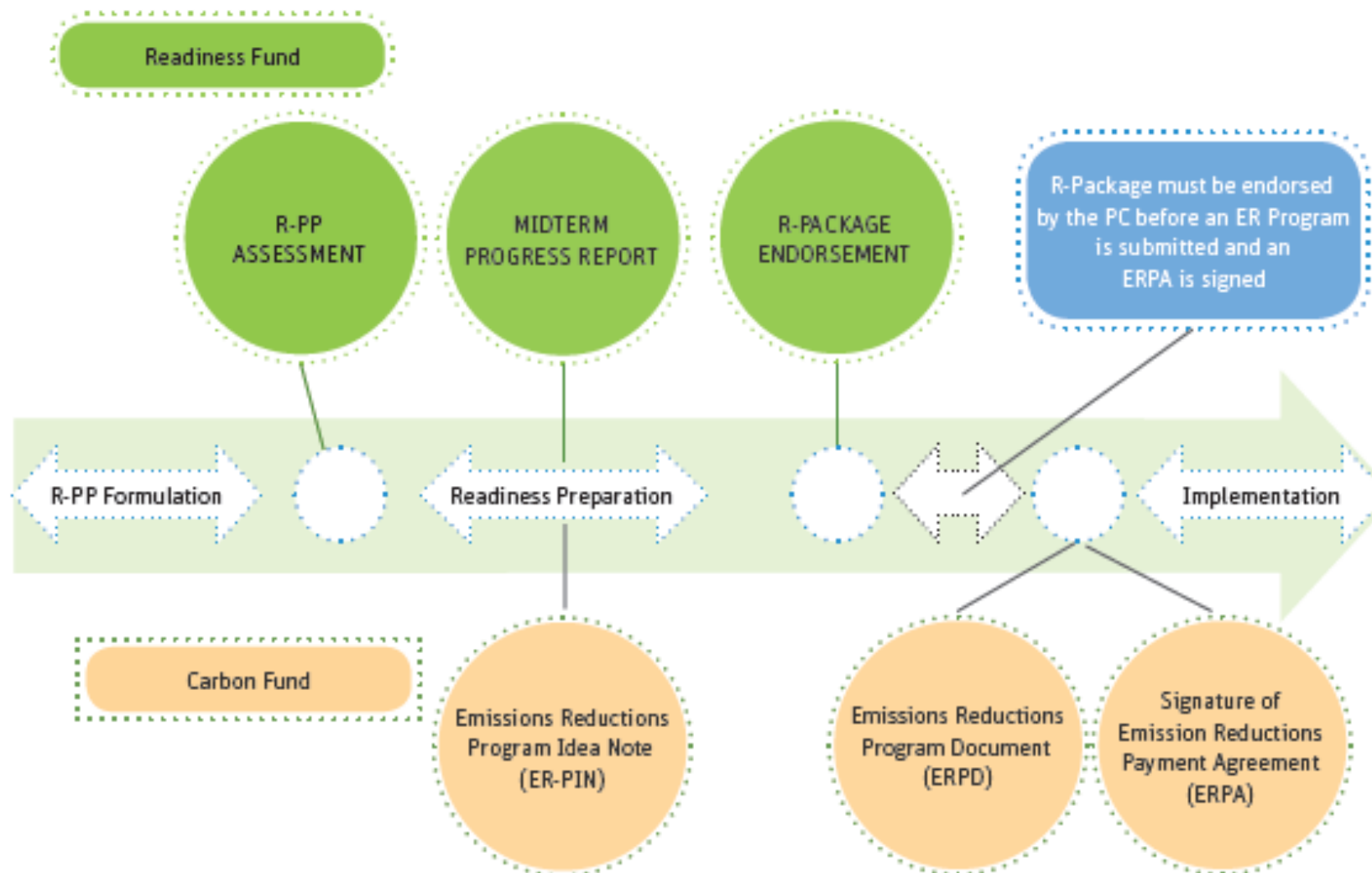
# Three Phases of REDD+ Financing



**WORLD BANK GROUP**



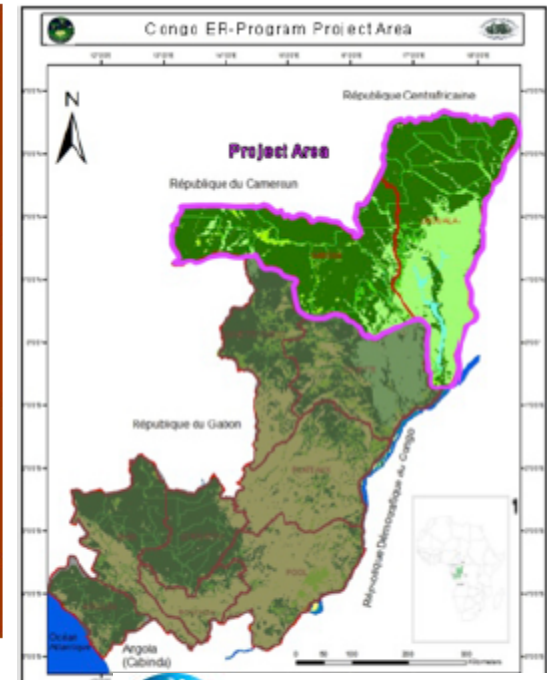
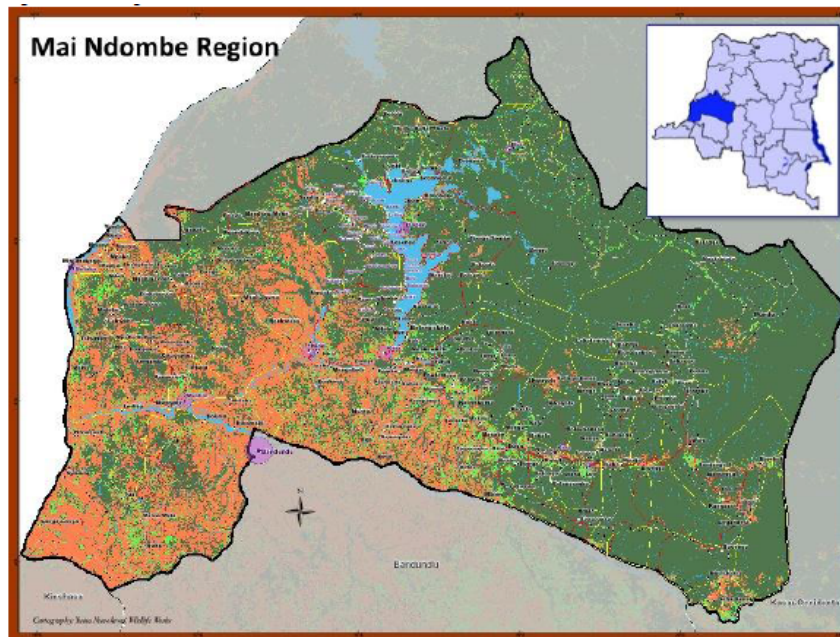
# The Forest Carbon Partnership Facility Process





# REDD+ Projects in the Congo Basin

	DRC	ROC
Location	Plateau and Maï Ndombe	Sangha et Likouala
Project area	12.3 million ha	12.35 million ha
Total CO <sub>2</sub> e reduction forecast through 2020	42.45 million t	11.7 million t



**WORLD BANK GROUP**