

Collaborative Archival Preservation and Capacity Building : Wisconsin, JGI & CRSN

Aliko Songolo
University of Wisconsin-Madison

16th Meeting of the Congo Basin Forest Partnership
Kigali, 21-26 November 2016

OUTLINE

- **CENTRAL AFRICA INITIATIVE (CAI)**
- **PARTNERSHIPS IN CENTRAL AFRICA**
- **PARTNERSHIPS IN DRC**
 - - CENTRE DE RECHERCHE EN SCIENCES NATURELLES (CRSN)
 - - CENTRE DE RECHERCHE EN HYDROBIOLOGIE (CRH)
 - - BUKAVU UNIVERSITIES (UOB, UCB, UEA, ISP)
- **COLLABORATIVE PROJECTS**
 - - MAP PRESERVATION (with JGI & CRSN)
 - - CAPACITY BUILDING (with CRSN & Bukavu Universities)
 - - LIBRARY RESTORATION & UPDATING (with CAMP)
- **CONCLUSION**
 - - Goals & Challenges

Central Africa Initiative (CAI)



<http://africa.wisc.edu/cai/en/>

CAI background

- Founded in 2012 by Don Waller and Aliko Songolo
- Interdisciplinary approach to promoting conservation education, research, and knowledge exchange in Congo Basin
- 2012 trip to Cameroon & Gabon, 2015 trip to DRC & Rwanda, several CBFP meetings
- Variety of Central African, North American, and European partners



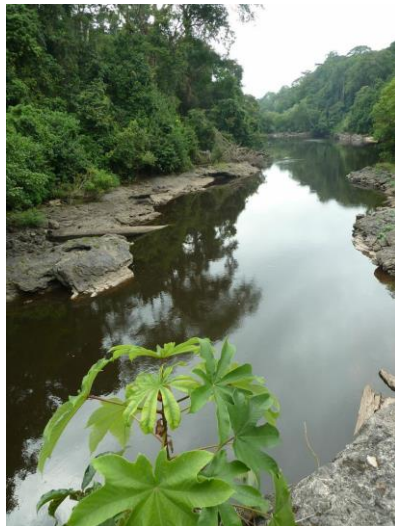
Central African partners

- Centre de Recherche en Sciences Naturelles – Lwiro
- Parc National de la Bénoué (Cameroon)
- Chimère Diaw & African Model Forest Network
- Zac Tchoundjeu & World Agroforestry Centre
- Other Cameroonian and Congolese research institutions (EFG, U. Dschang, Bukavu universities)

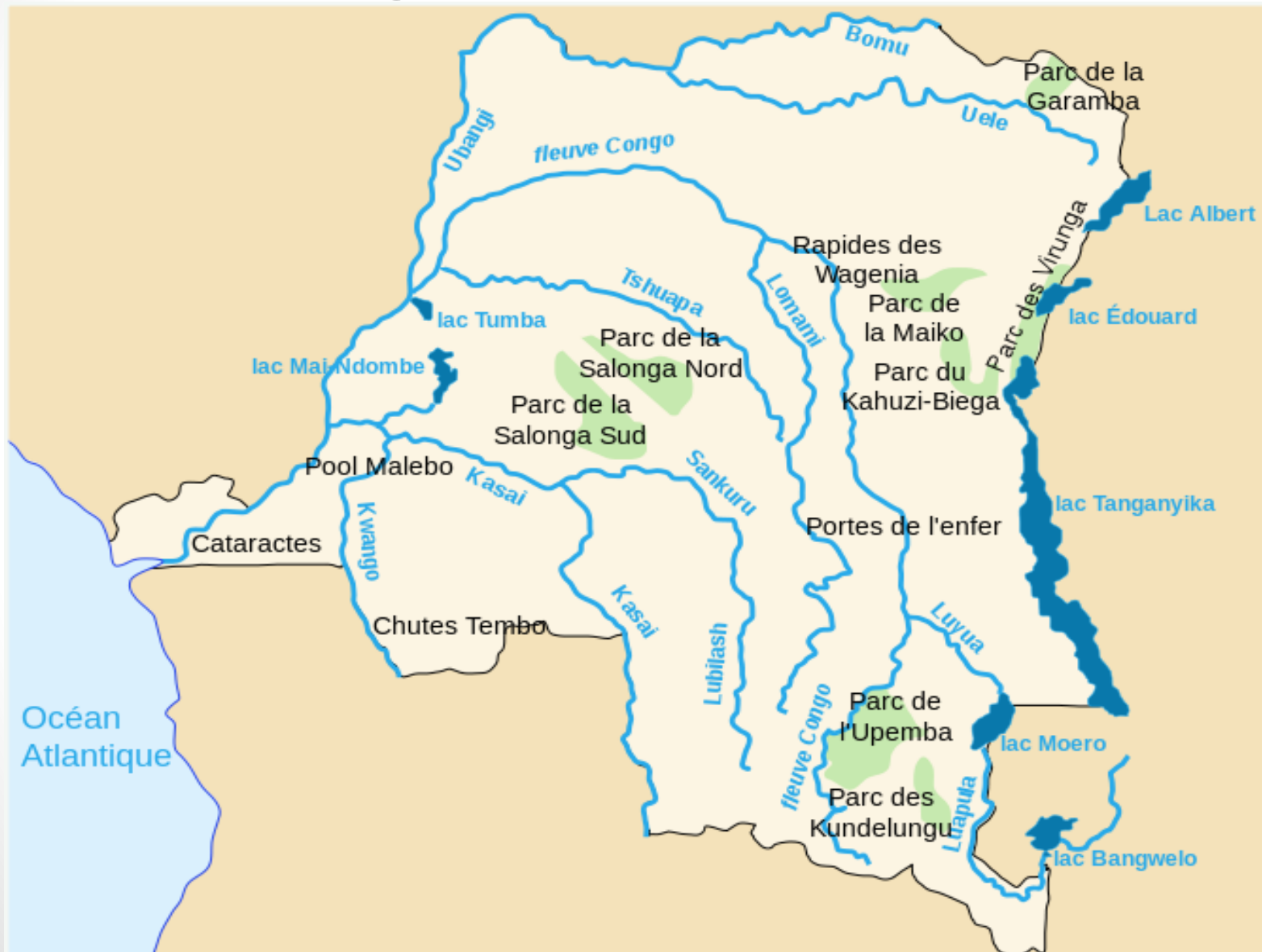


Why CRSN - Lwiro?

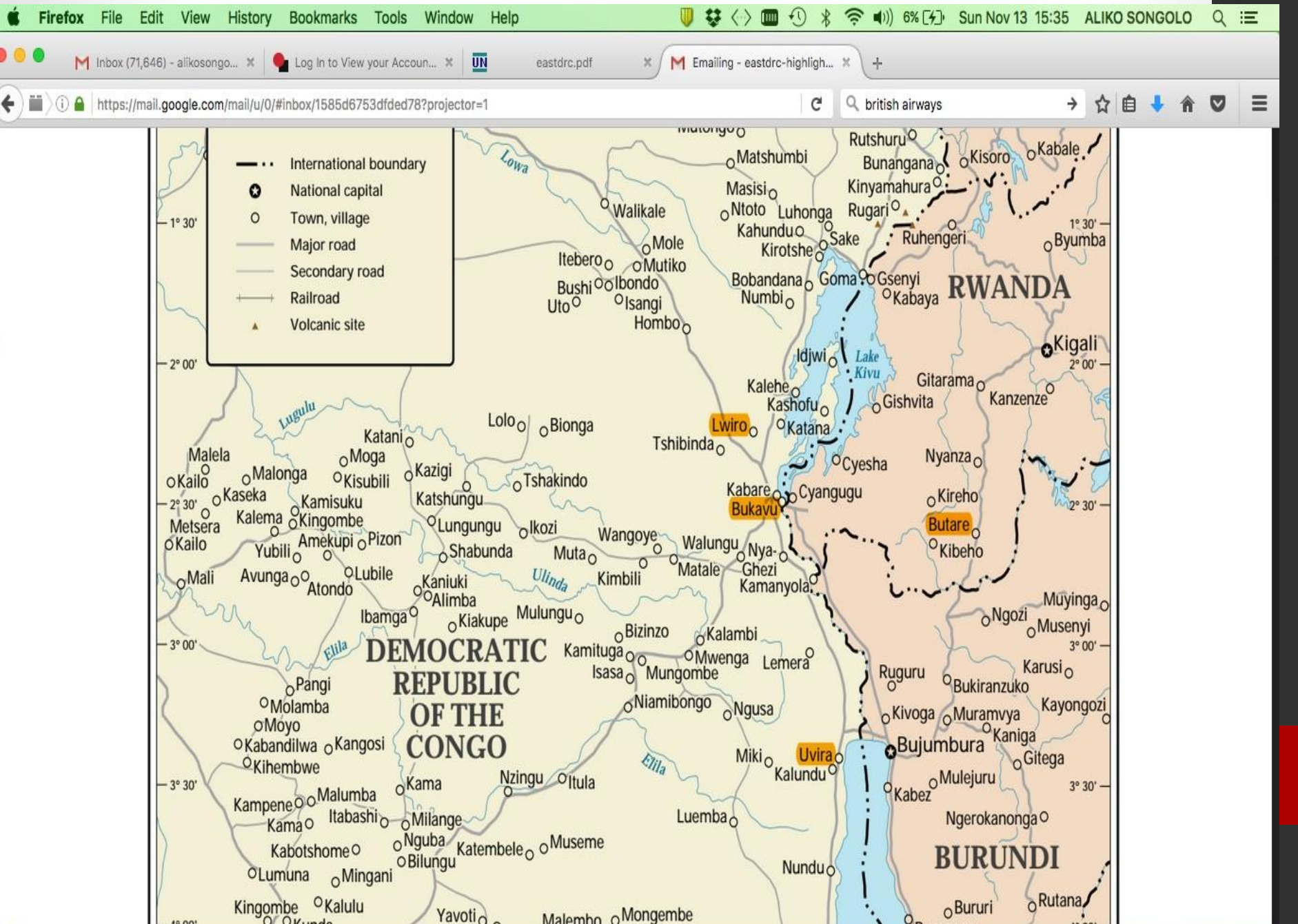
- Central Location in rich biodiversity area
- Ready-made infrastructure
- Established organizational structure
- Seven decades of ongoing crucial scientific research
- Need for enhanced research funding and cooperation related to conservation, ecology, agriculture, climate change, etc. in the region

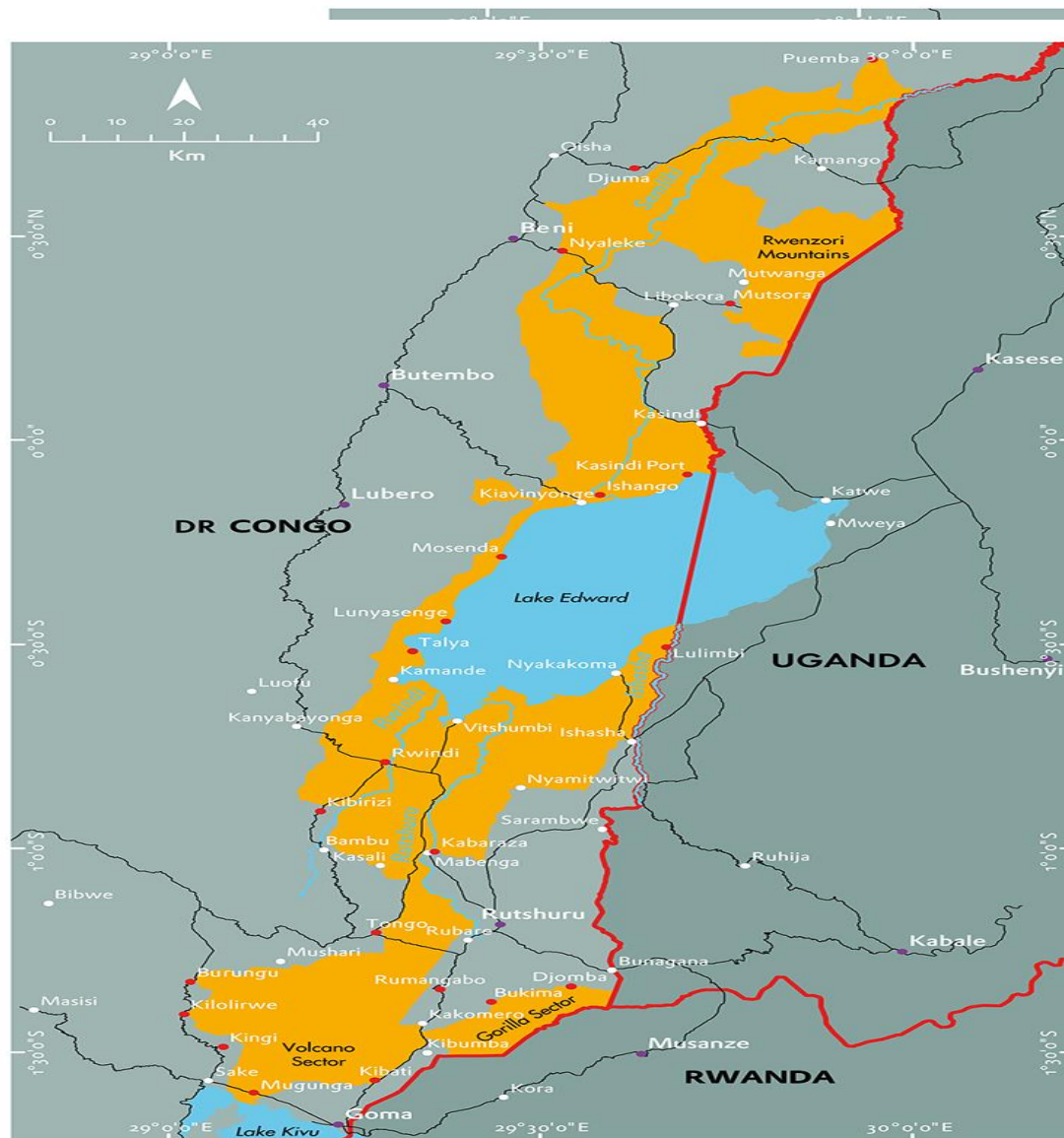


D. R. Congo Protected Areas



CRSN Lwiro is centrally located to take advantage of the rich diversity of the region





VIRUNGA NATIONAL PARK

DEMOCRATIC REPUBLIC OF CONGO

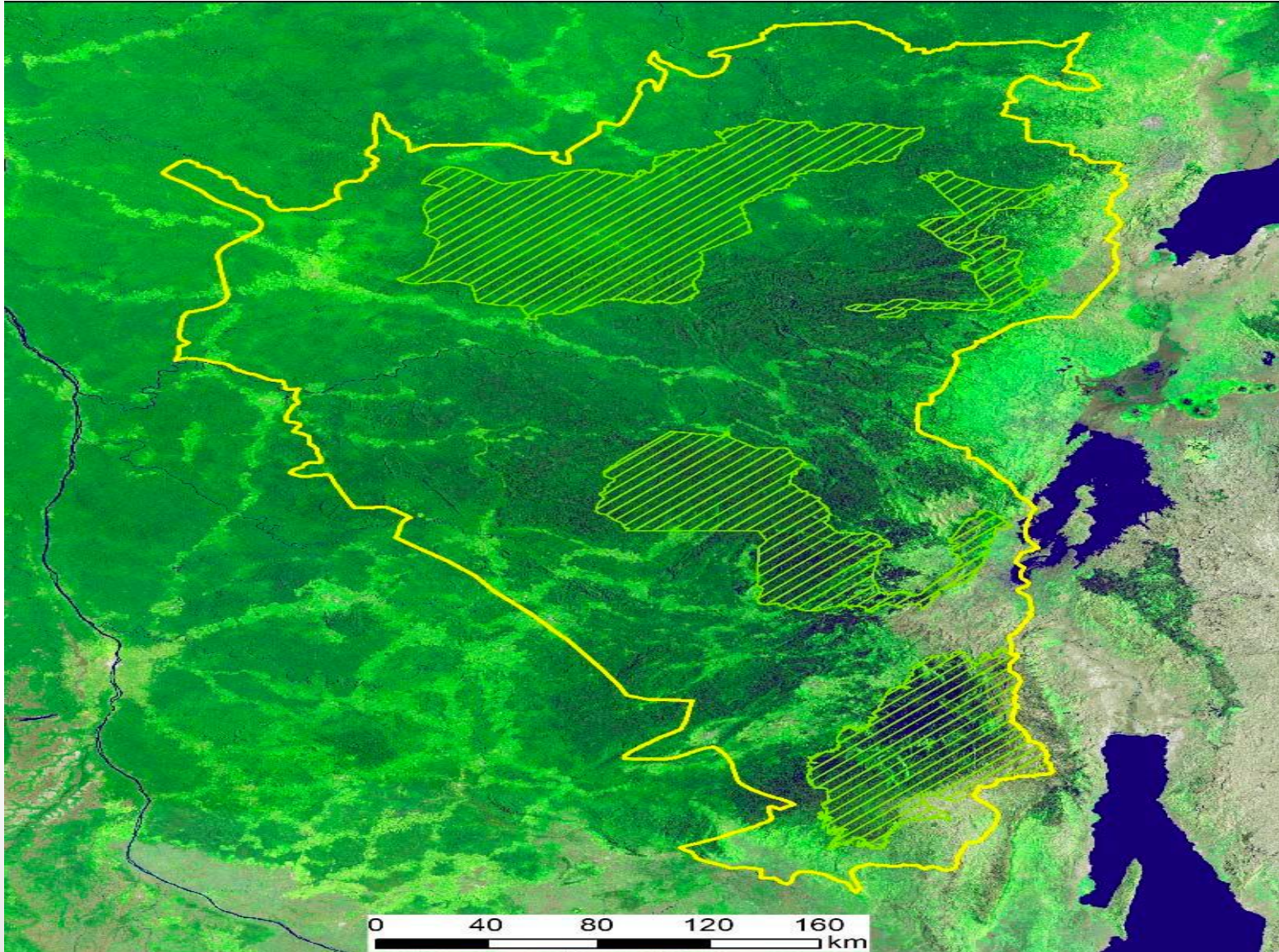
Established in 1925
Africa's Oldest National Park

- City
- Village
- Patrol Post
- Road
- International Border
- River
- Lake
- Virunga NP

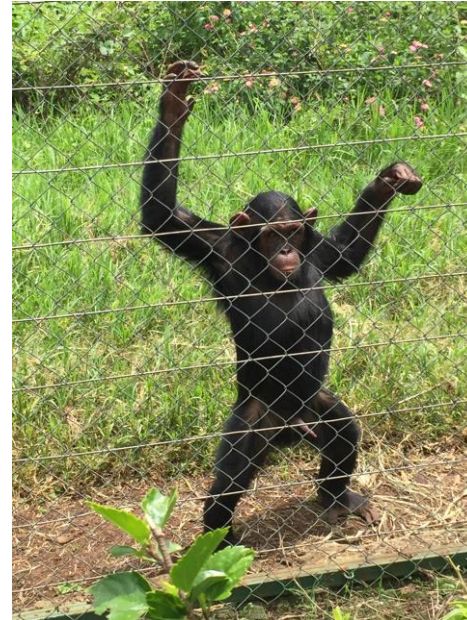


Mountains near Virunga National Park at the border of Rwanda and northwestern DRC, an area of recent conflict

In addition to the Virunga National Park, Kahuzi-Biega National Park is nearby, and Maiko National Park, the Itombwe Reserve, and Tayna Gorilla sanctuary are within reach.



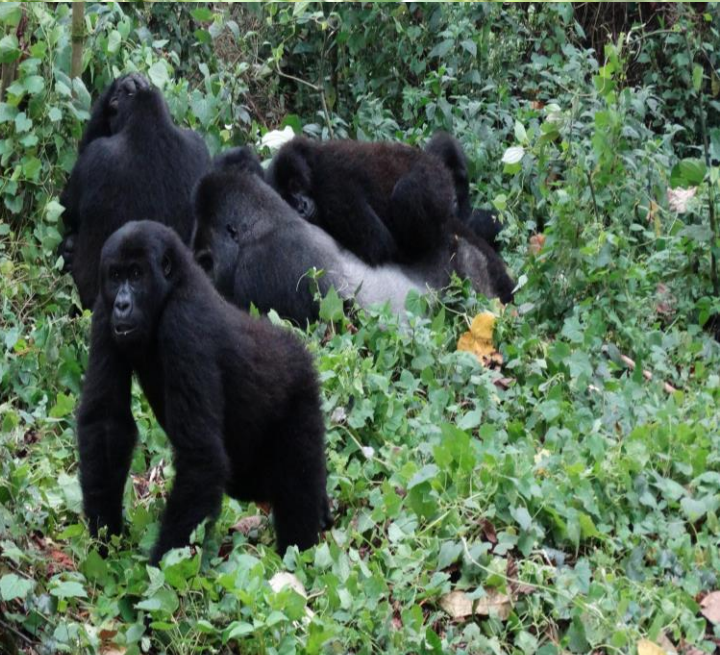
Centre de Réhabilitation des Primates de Lwiro



Lwiro Primate Sanctuary



Eastern Lowland Gorillas in
Kahuzi-Biega National Park
near Lwiro



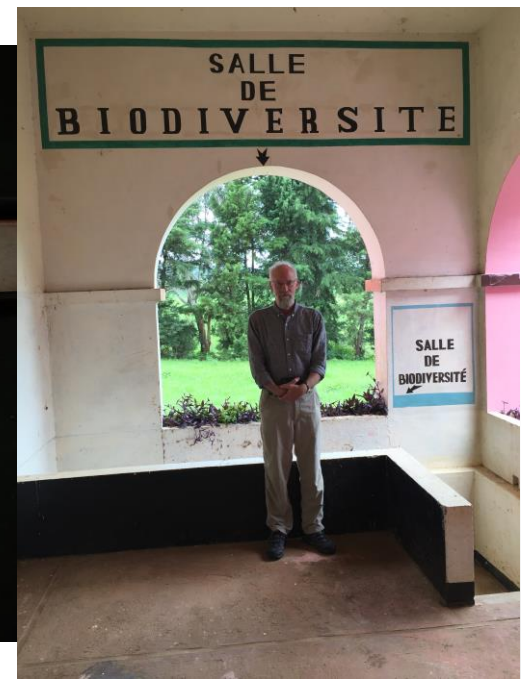


From IRSAC to CRSN

CRSN Conference Room and Hallways



CRSN Research Laboratories



Jane Goodall Institute (JGI) and Centre de Recherche en Sciences Naturelles (CRSN) – Lwiro (DRC)

A partnership to map and archive historic, hand drawn maps from Lwiro (CRSN) that show faunal and floral species distributions and habitat types within the region

- JGI has used the newly digitized (historic) maps to overlay in GIS platforms with current satellite imagery to improve site specific conservation action planning

- In partnership with the UW-Madison Geography Map Library, and the Nelson Institute for Environmental Studies, we have archived 143 (mainly primates) maps to date, yet the total map collection at Lwiro is over 3,000 – **we have work to do!**



Pan Troglodyte (common chimpanzee)



the Jane Goodall Institute

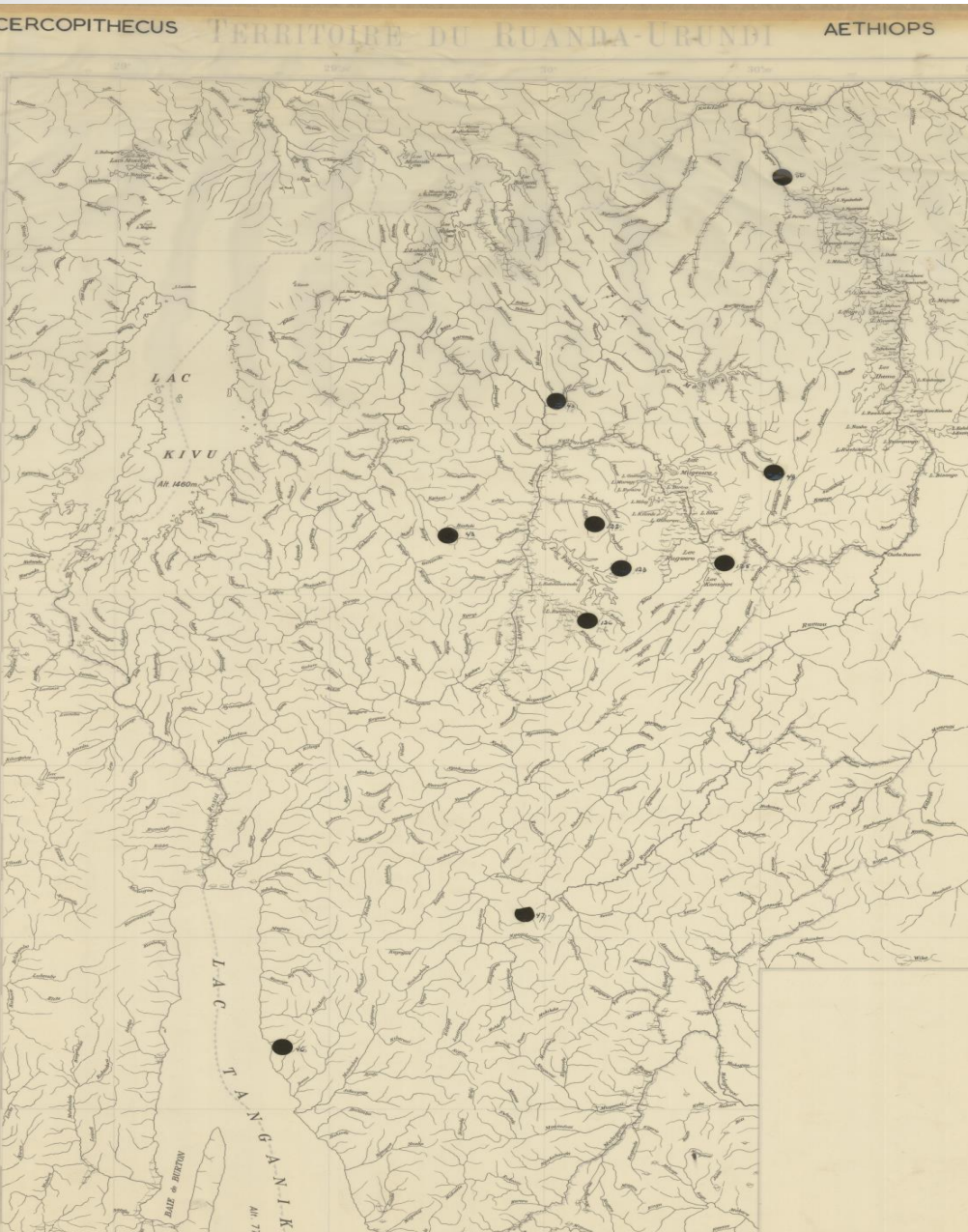
Map & Geospatial Data Librarian Jaime Martindale and Program Coordinator Nathan Schulfer prepare Lwiro maps for digitization



Types of Maps



Distribution of *Cercopithecus aethiops* in Rwanda & Burundi, ca. 1955



Partial inventory of maps checked out from Lwiro

Excel File Edit View Insert Format Tools Data Window Help

CRSN_cartes_decharge_20150823_UWupdates

Home Insert Page Layout Formulas Data Review View

Calibri (Body) 22 A A

B I U

Conditional Formatting

Format as Table

Cell Styles

Number

Cells

Editing

127

Liste des Cartes de Distribution de Primat

No.Species	NW	NE	SE	SW	test de	nombre
1 <i>Allenpithecus nigroviridis</i>	X					1
2 <i>Cercocebus albigena</i>	X	X	X			3
3 <i>Cercocebus aterimus</i>	X	X	X	X		4
4 <i>Cercocebus galeritus</i>	X	X	X			3
6 <i>Cercopithecus aethiops</i>	X	X	X	X	X	5
7 <i>Cercopithecus ascanius</i>	X	X	X	X		4
9 <i>Cercopithecus cephus</i>				X		1
# <i>Cercopithecus dryas</i>		XX		X	X	4
# <i>Cercopithecus hamlyni</i>	X	X		X	X	4
# <i>Cercopithecus leucampyx</i>	X			X	X	3
# <i>Cercopithecus lhoesti</i>	X	X		X		3
# <i>Cercopithecus mitis</i>	X	X	X	X	X	5
# <i>Cercopithecus mona</i>	X	X	X	X		4
# <i>Cercopithecus neglectus</i>	X	X	X	X		4
# <i>Cercopithecus nictitans</i>	X	X	X	X		4
# <i>Cercopithecus pygmaeus</i>	X					1
# <i>Cercopithecus schreidti</i>	X					1
# <i>Cercopithecus talapoin</i>	X			X		2
# <i>Cercopithecus torquatus</i>	X					1
# <i>Colobus abyssinicus</i>	X	X				2
# <i>Colobus badius</i>	X	X	X	X	X	5

1er decharge 2eme decharge digitizing list spp total digitized

Ready Average: 15.3956044 Count: 309 Sum: 1401 80%



Small grants program

- Created Grant Guide, published it on the CAI website, and sent it out to Central African partners
- Initiated collaboration with CRSN on proposals for National Geographic small grants program
- Expanded CAI website to provide links to grant databases and free journals, software, etc.



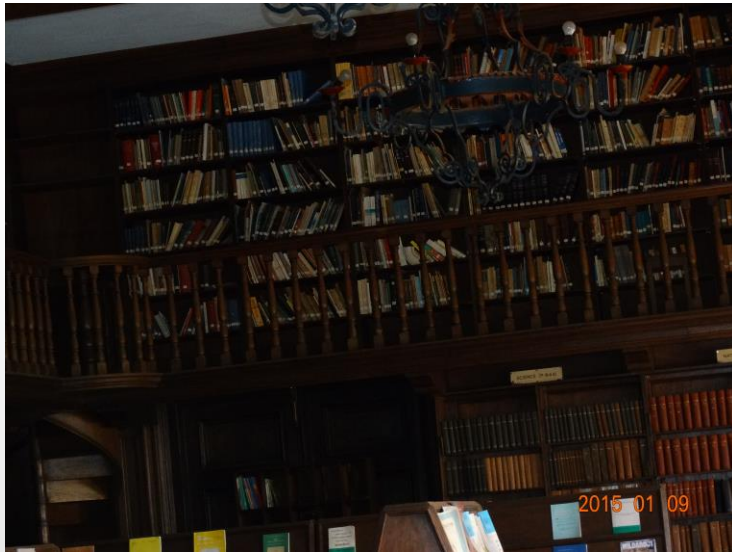
LIBRARY RESTORATION and UPDATING

A partnership with Cooperative Africana Materials Projects (CAMP)



2015 01 09

Library Collection and Card Catalog



Library personnel with visiting Wisconsin Africana Librarian Emilie Ngonguidjol Songolo, January 2015



Conclusion

- **Goals**

- Improve access to scientific tools for Lwiro partners
- Improve access to online resources through JSTOR's African Access Initiative and other means
- Facilitate two-way short-term visits between Wisconsin and CRSN & Bukavu universities
- Provide opportunities for UW graduate students and postdocs to conduct research in the area
- Improve infrastructure

- **Challenges**

- Funding
- Availability of Internet
- Continued political instability

Thank you!