



Woods Hole Research Center

**Addressing Climate Mitigation and Adaptation
in the Congo Basin**

**A case study in the Equateur Province of the
Democratic Republic of the Congo**

CBFP Conference – Tuesday November 2016

22^{eme} Conférence des Parties

Kigali, Rwanda

Melaine Kermarc

mkermarc@whrc.org



Overview of the Presentation

Emissions in the DRC

- **Main causes of emissions and implications in the DRC**

Mitigation and Adaptation in DRC

- **Cross-sectorial and decentralised approach**

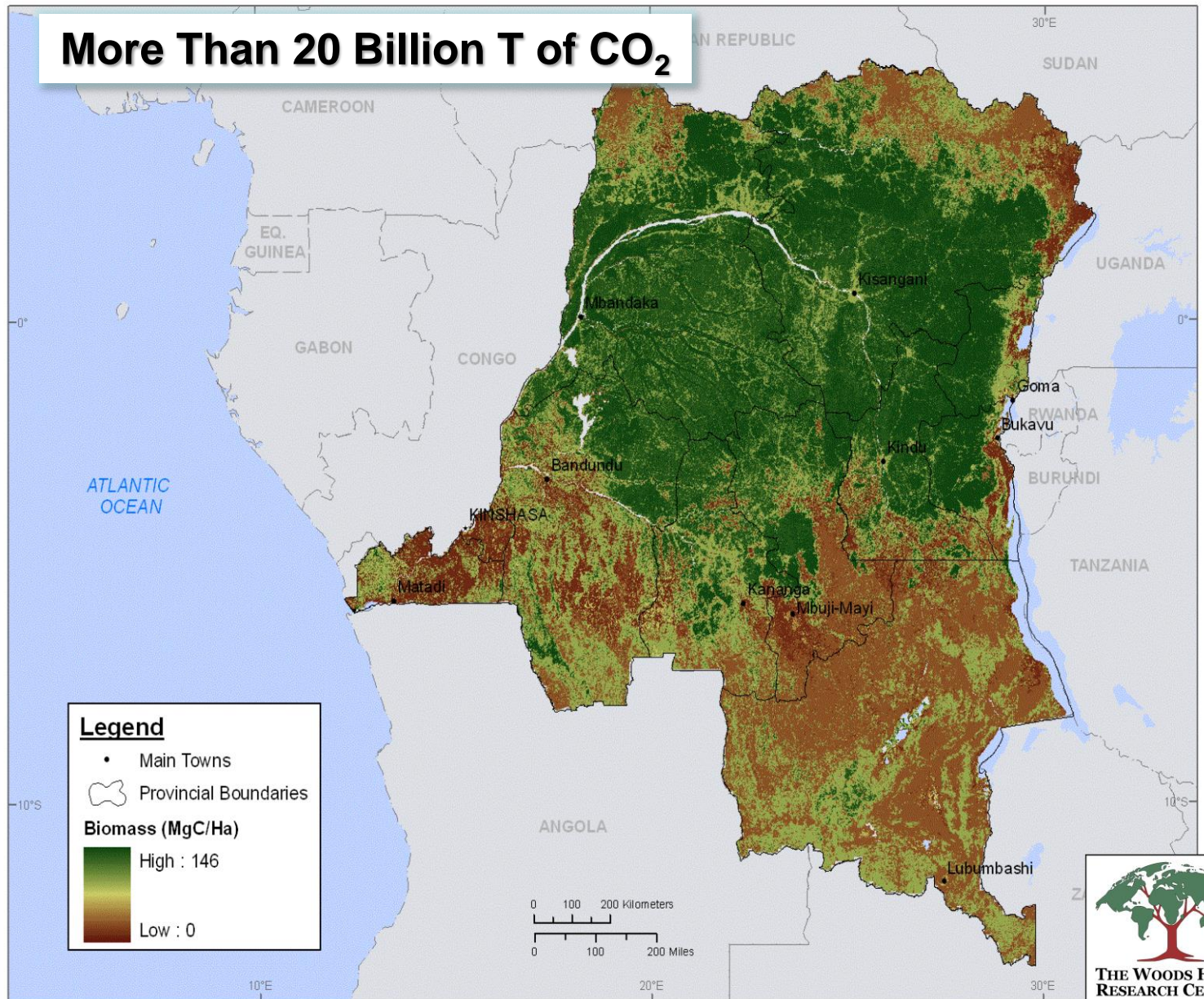
Lessons from Equateur

- **Early findings from the implementation of a pilot REDD+ project and the launch of a jurisdictional program for Equateur**



Why focus on the DRC?

More Than 20 Billion T of CO₂





Main Driver of Emissions in the DRC



Slash and Burn Agriculture



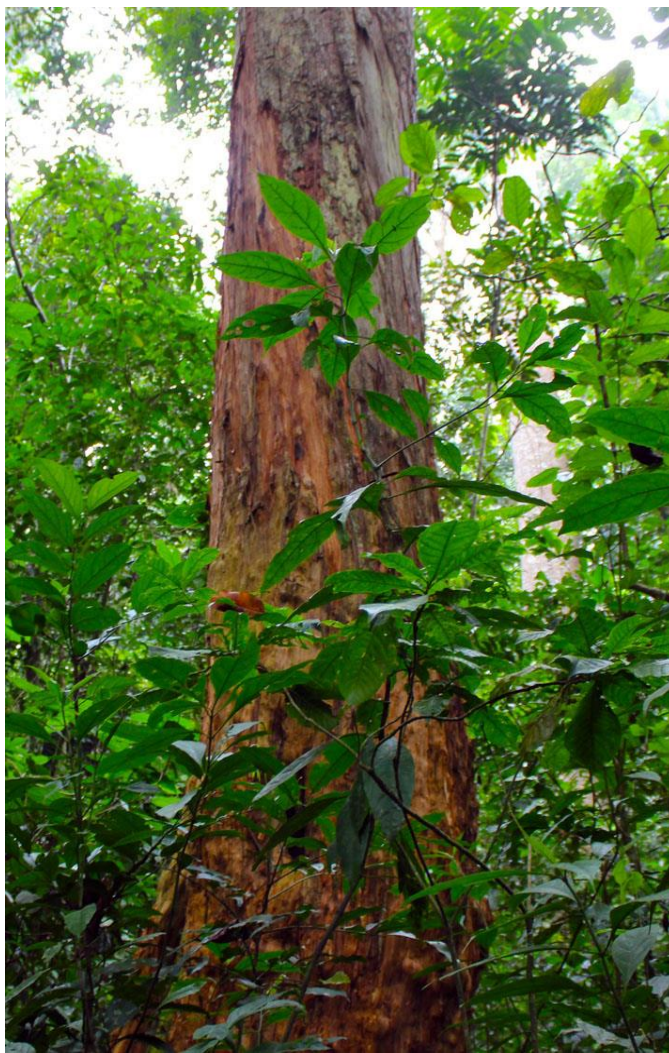
Demand in Biomass Energy



Illegal Logging to a lesser extent



**Sparse and
small scale**



**Risk of
underestimation**

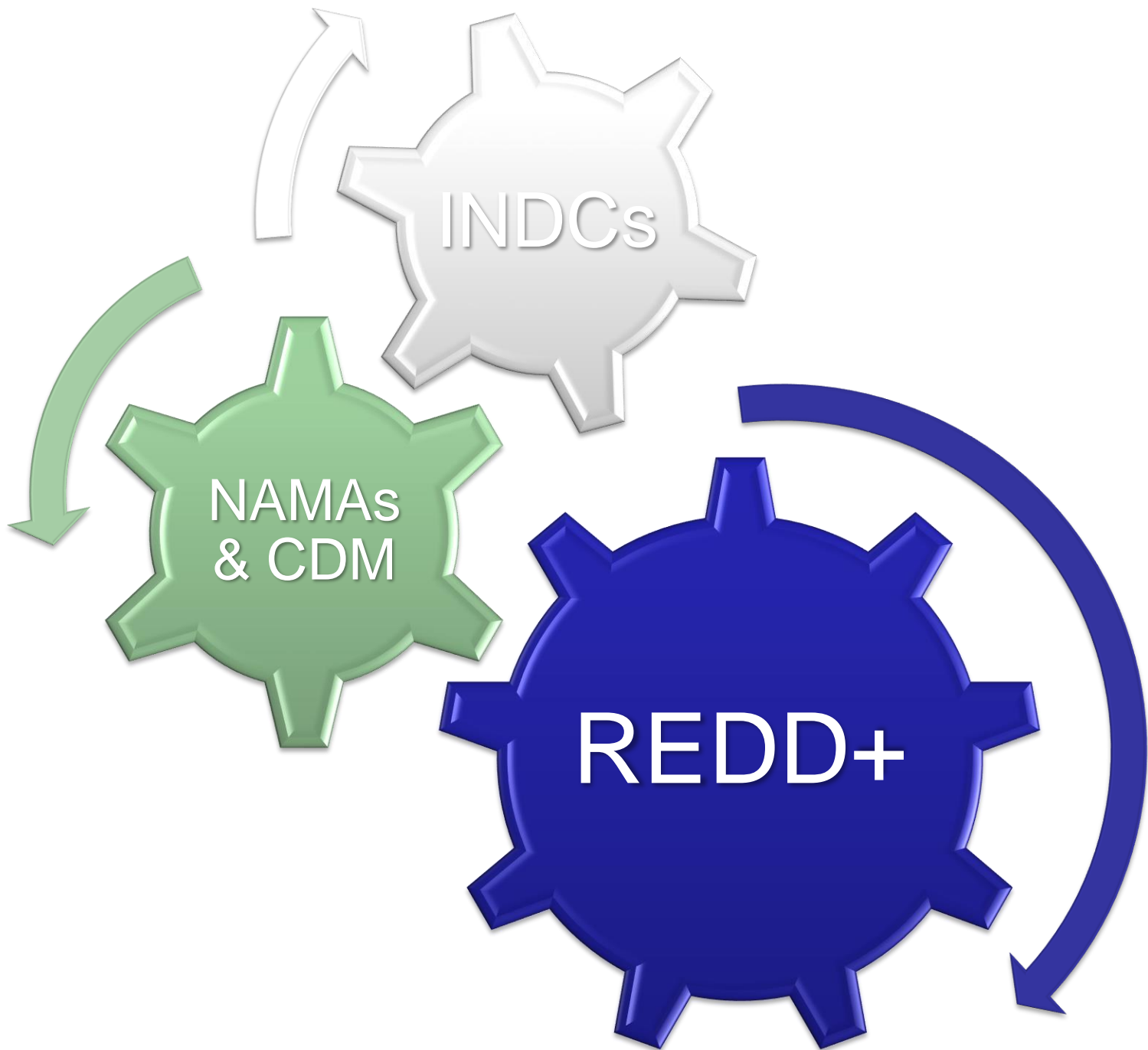


**Difficult and costly
to address**

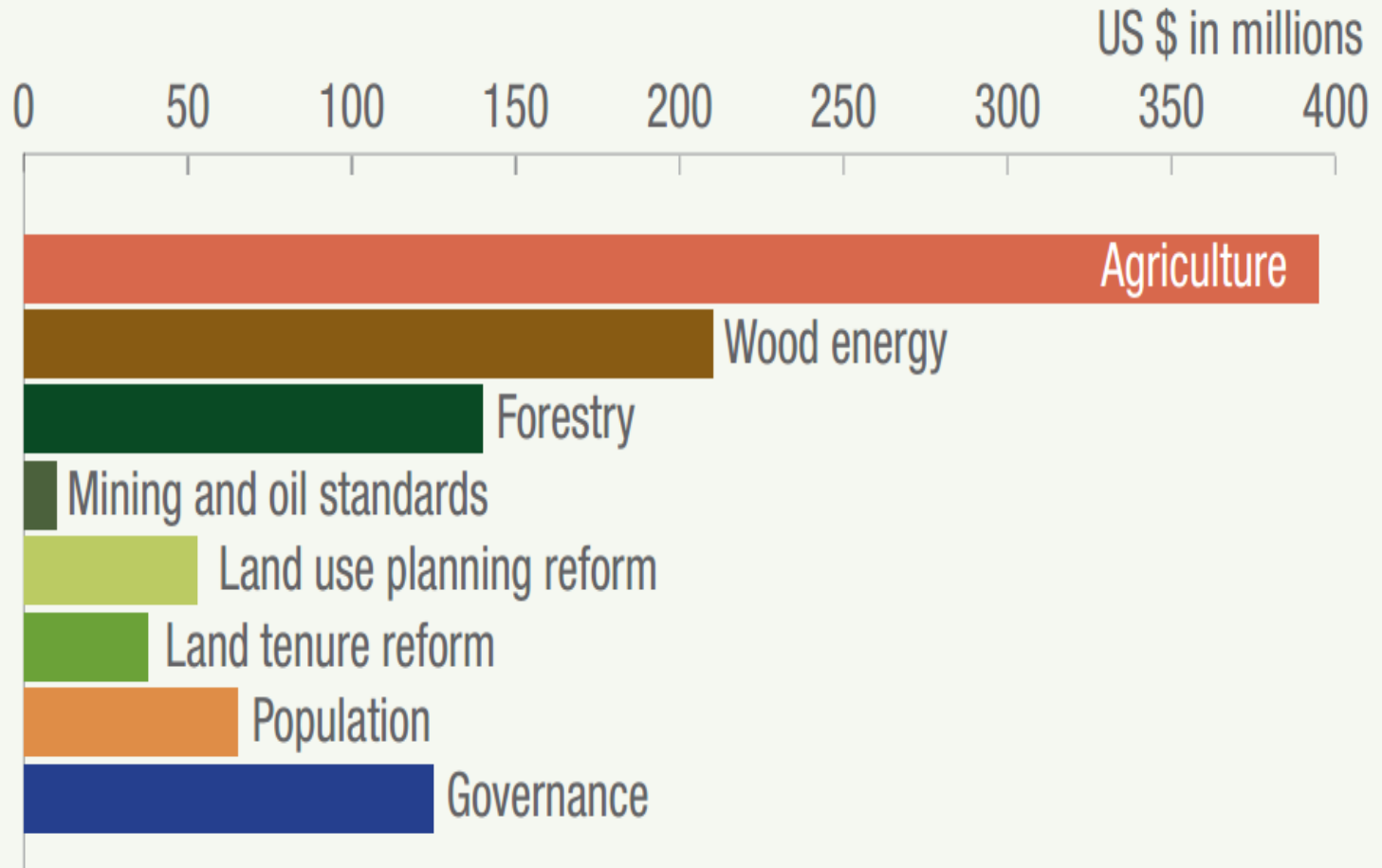




Adaptation & Mitigation



The DRC REDD+ Investment Plan



Not just a forest business

Effort must be coordinated across sectors to avoid conflicting efforts



Making
REDD+
Work

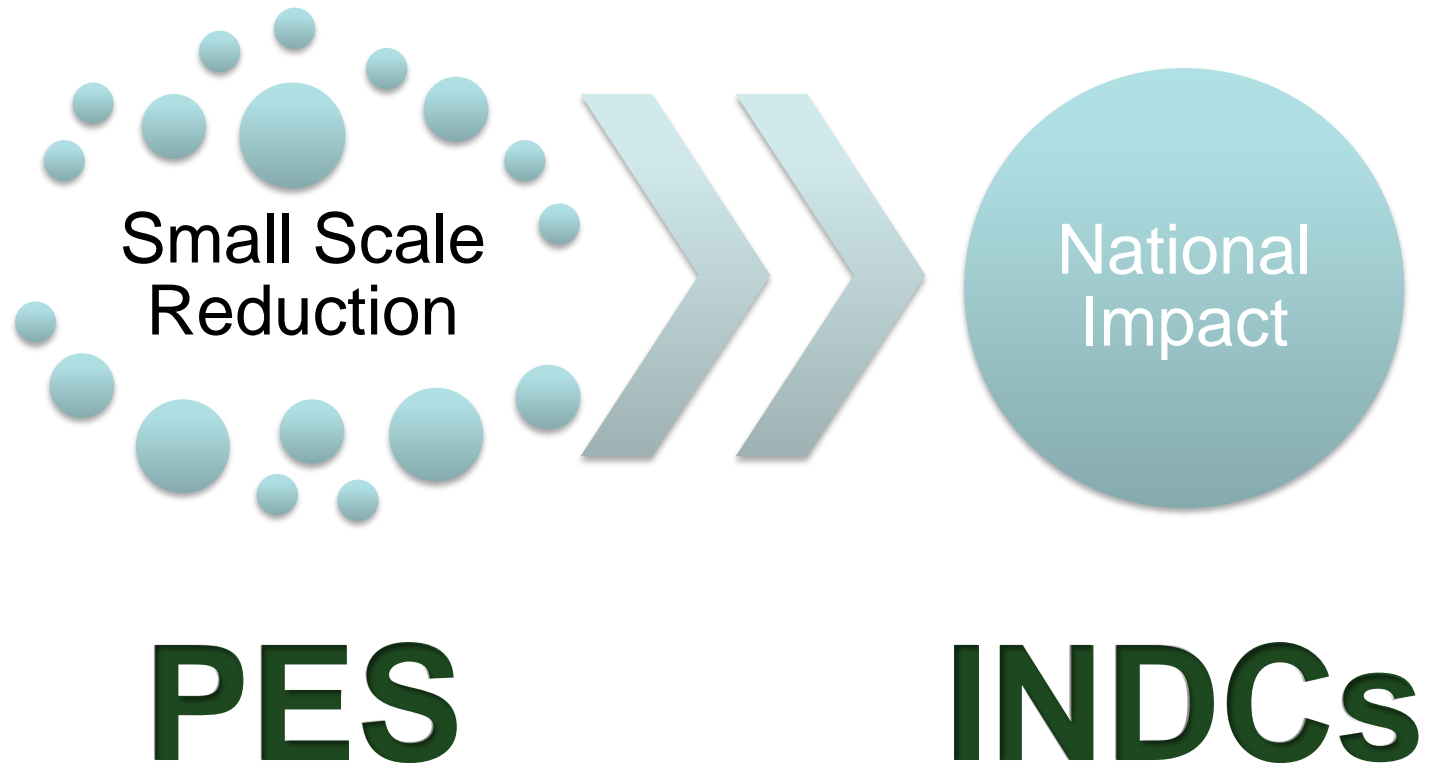


Impact cannot be achieved at the national level only



Acting Locally for a Global Impact

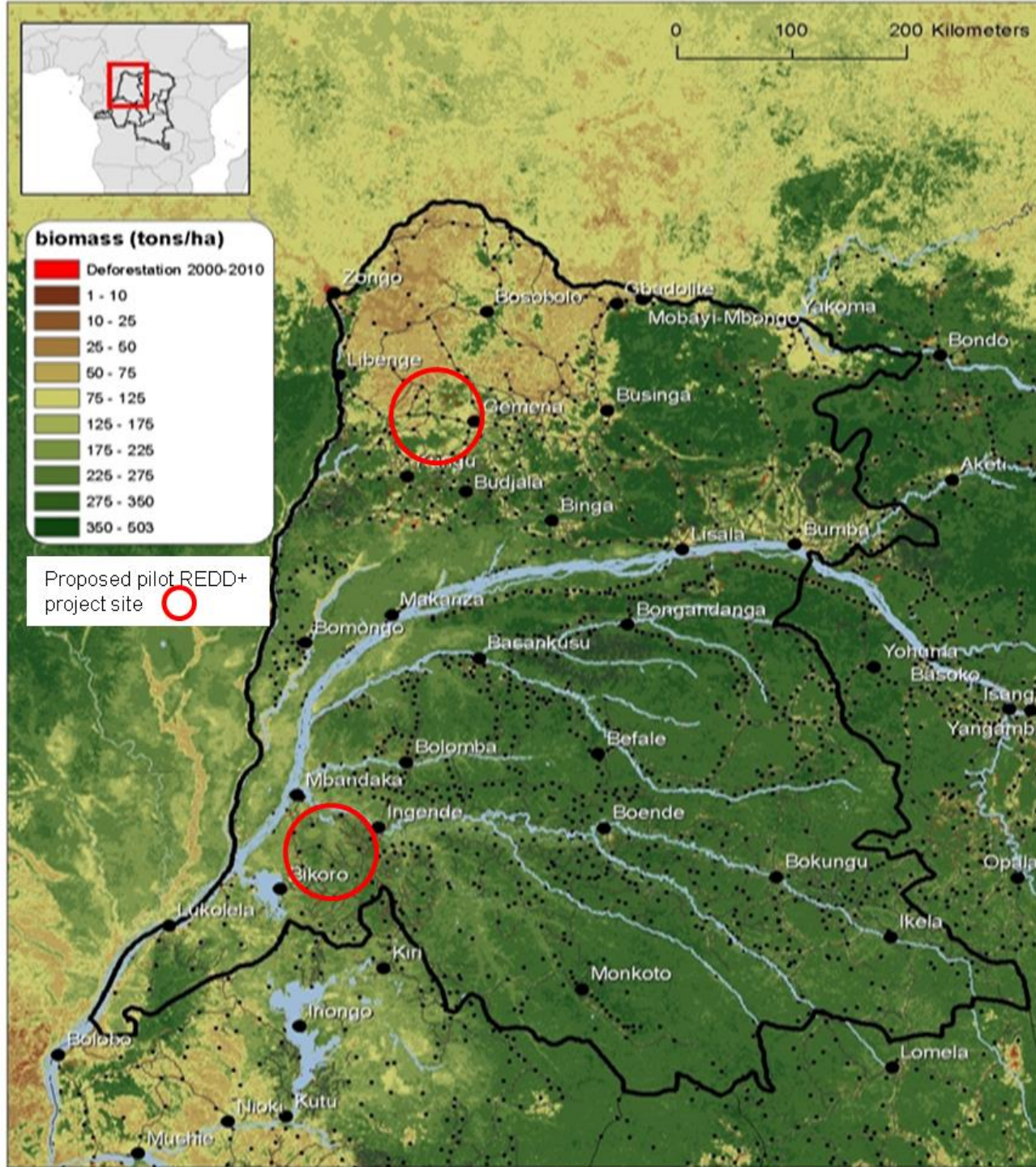
Having an
Impact



Payment for performance to incite emission
reductions

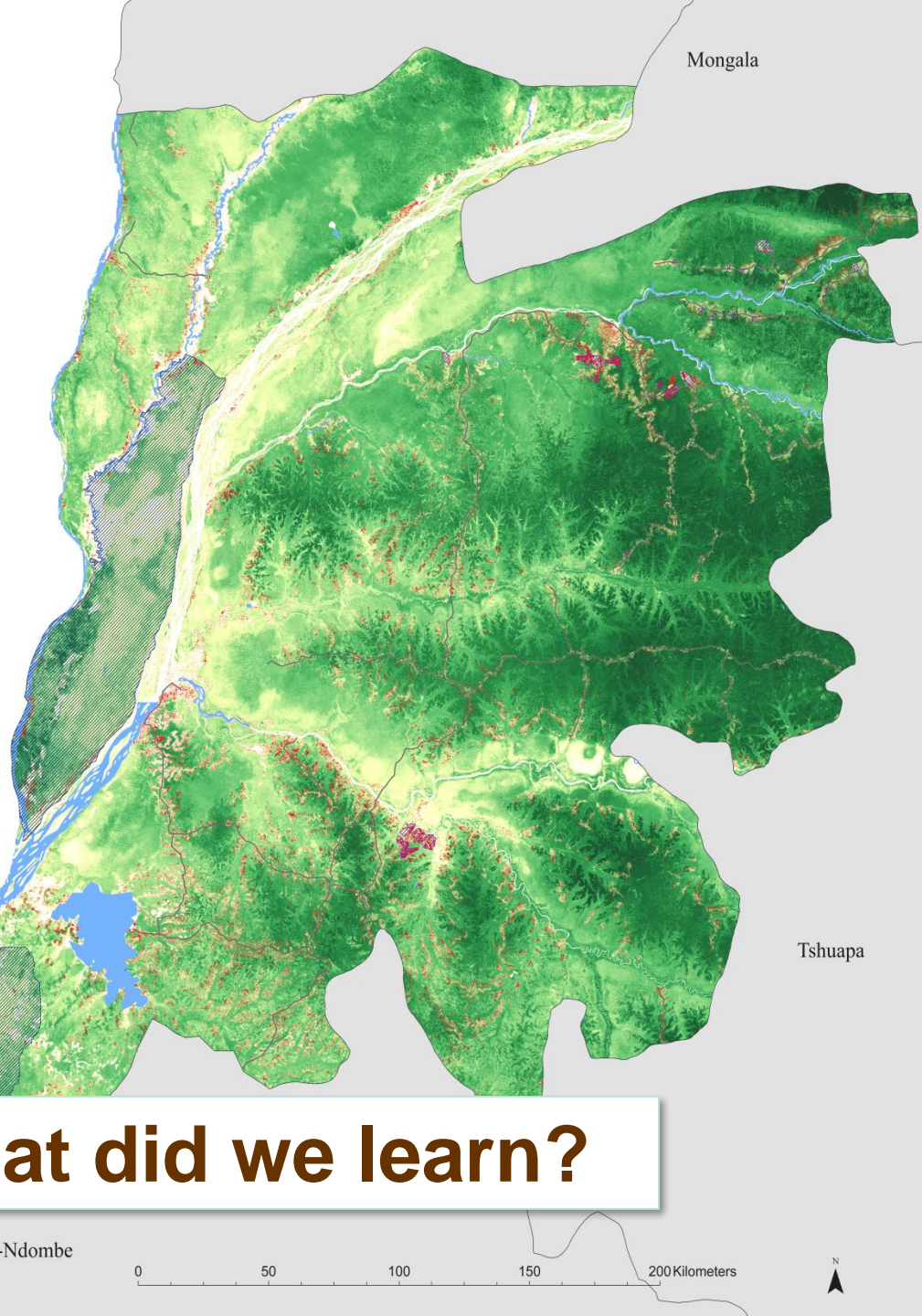
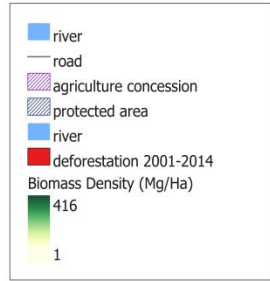


Experience from a Pilot REDD+

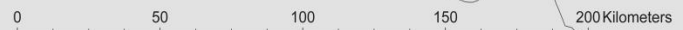




Launching a Jurisdictional Program



What did we learn?



Consultations from the design stage onward



Implication of
Local
Stakeholders



Of Government, Civil Society & Private Sector

Short Term Technical Support

Capacity
Building



Long Term Partnership with Tertiary
Education Institution at Provincial level

Funding decentralized activities in provinces

Decentralization



**Support to Decentralized Territorial Entities
(ETDs)**



END



“We do not inherit our planet, we borrow it from future generations”

St Exupery