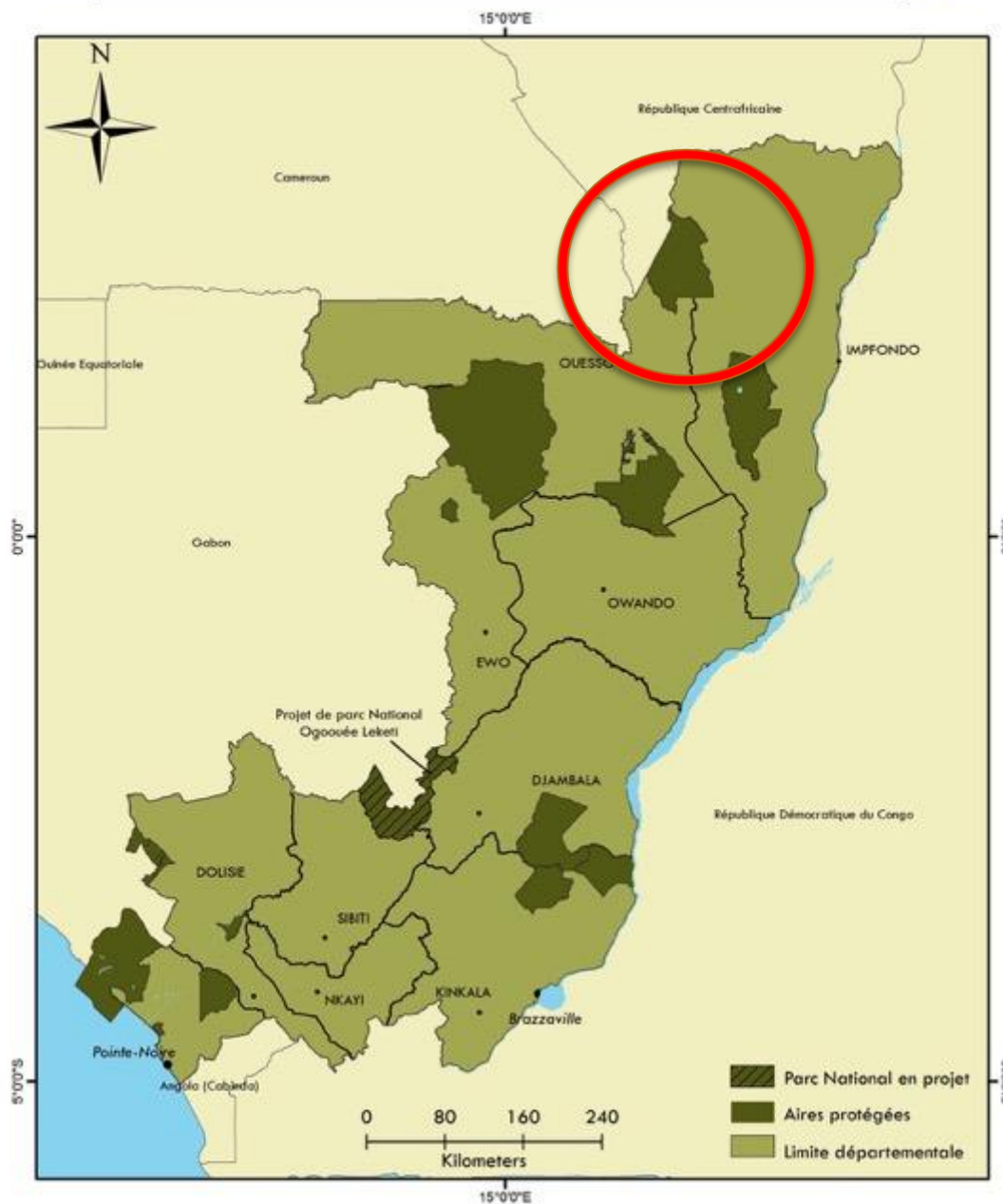


Evaluating effectiveness of Public-Private
Partnerships for Protected Areas in Central Africa
– example of Nouabalé-Ndoki National Park

Emma J Stokes PhD, Central Africa Regional Director



- Why a PPP?
- What was needed to put this in place
- Is it working?
- Opportunities and challenges





















Long history of PA management

- 1991 – WCS conducted wildlife surveys in Ndoki forests
- 1993 – Nouabalé-Ndoki National Park created
- 1994 – WCS signed a co-management agreement for NNNP with the Government of Congo
- 1999 – PROGEPP buffer zone management project created between GOC, WCS and CIB
- 2008 – Financial crisis – boom and bust
- 2010 – Elephant poaching crisis

New Public-Private Partnership agreements signed in 2013-2014





FONDATION
NOUABALÉ
NDOKI

The Ndoki Foundation

**FOUNDATION
BOARD**

MEMBERS:
2 GOV'T, 2 WCS,
2 LOCAL NGO, 1
EXPERT, 1
RAPAC, 1 LCA

**PARK MANAGEMENT
UNIT (WCS)**

PARK DIRECTOR

**CONSERV-
ATION &
BIODIVERSITY**

**ADMIN &
FINANCE**

LOGISTICS

**RESEARCH &
MONITORING**

**COMMUNITY
DEVELOPM'T**



The Ndoki Foundation

**EXAMINE &
ADOPT
MANAGEMENT,
BUSINESS,
ANNUAL
BUDGET/WORK
PLAN;
STAFFING
PLAN;
M/E**

**FOUNDATION
BOARD**

**PARK MANAGEMENT
UNIT (WCS)**

**PREPARE
MANAGEMENT,
BUSINESS,
ANNUAL
BUDGET/WORK
PLAN,
PROCEDURES
MANUAL;
IMPLEMENT
MGT
PLAN/WORK
PLAN;
RECRUIT/TRAIN
PARK STAFF**

Key ingredients

- Law enforcement capacity
- Management systems
- Business planning
- Performance monitoring
- Strengthening of judiciary
- Community development

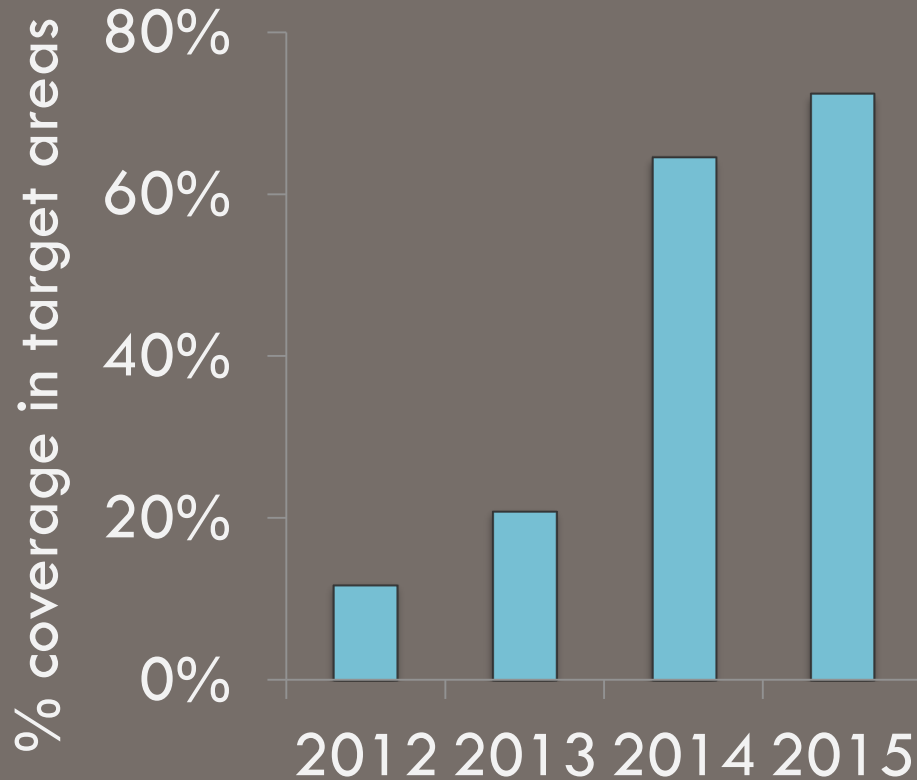


Law enforcement strategy

1. Expansion of ecoguard force and SMART patrols
2. Creation of Rapid Reaction Unit
3. Creation of Control Room (HQ)
4. Establish Wildlife Crime Unit
5. Establish community associations for fishing and hunting
6. Working with logging companies to monitor/enforce best practices



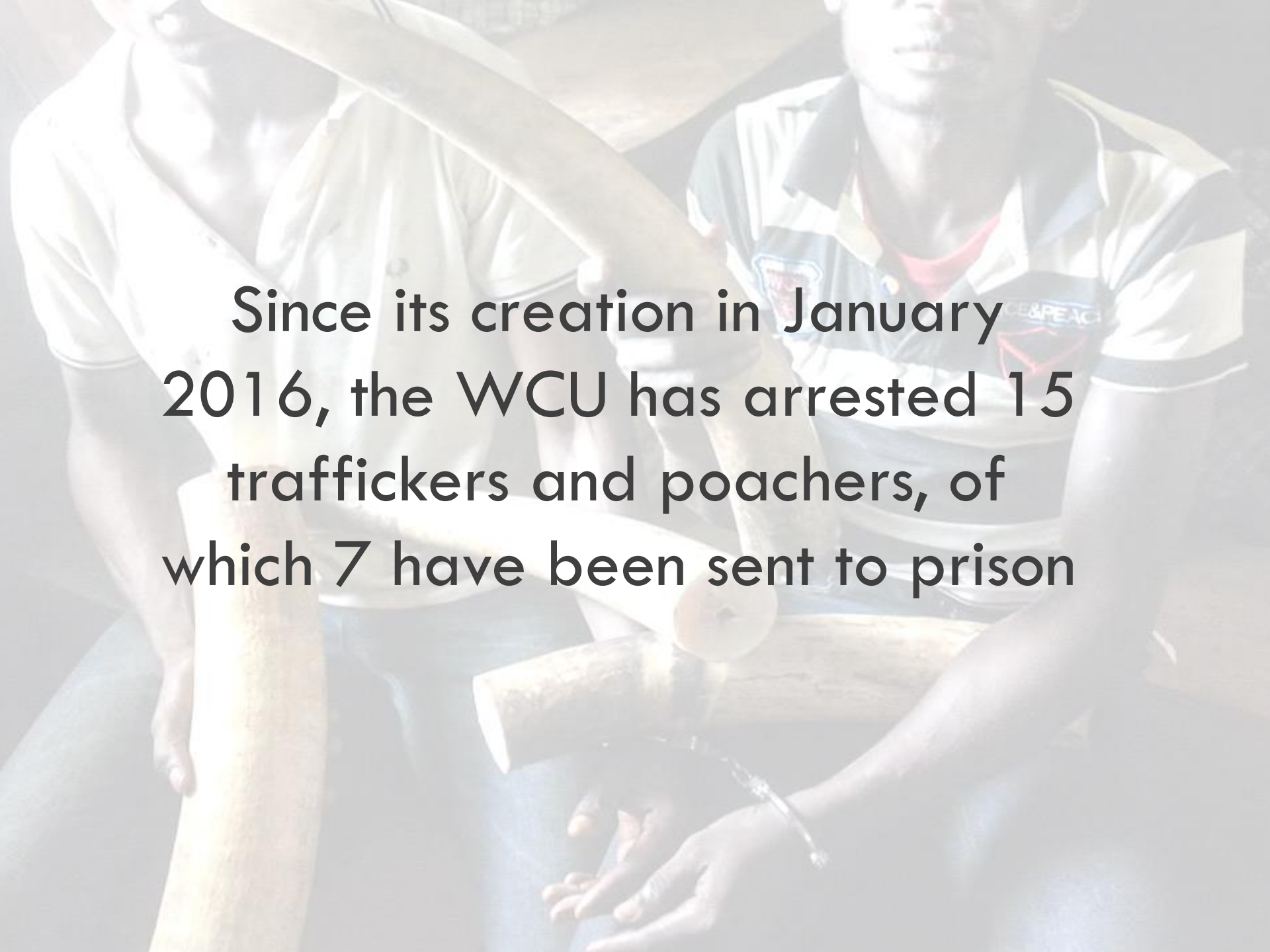
Patrol coverage



- 7-fold increase in ranger-force
- 85% increase in patrol coverage between 2013-2015
- 89% of 'critical area' now patrolled

Wildlife Crime Unit

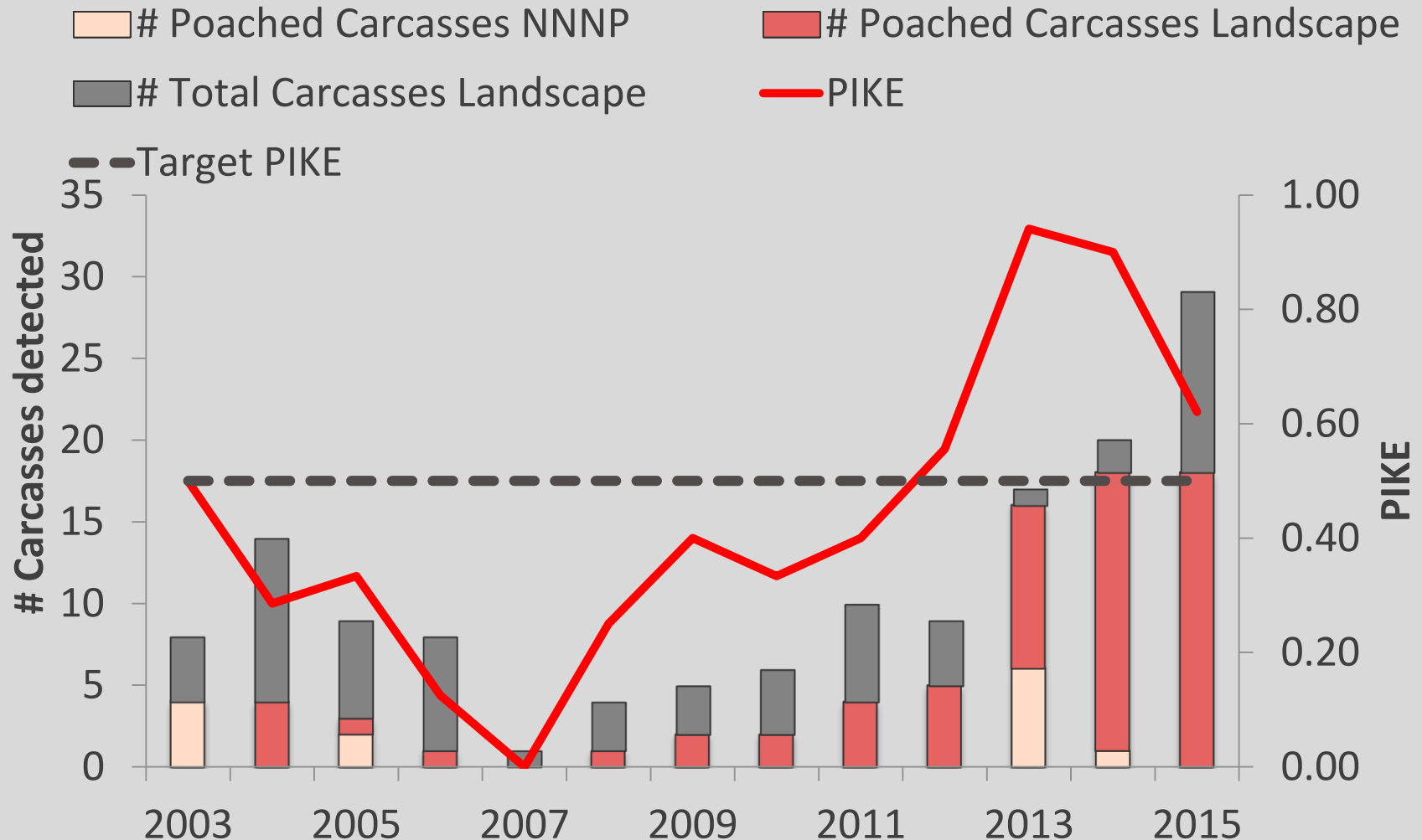


A photograph of two men sitting on the ground, surrounded by large, light-colored wooden logs. The man on the left is wearing a white polo shirt. The man on the right is wearing a dark polo shirt with a logo that includes the text 'CE&PEAC'. He has his hands cuffed in front of him. The background is slightly blurred, showing more logs and a wooden structure.

Since its creation in January 2016, the WCU has arrested 15 traffickers and poachers, of which 7 have been sent to prison



Proportion of dead elephants illegally killed is decreasing





Financial benefits

- \$2.5million new revenue annually
 - \$1mil FTNS
 - \$1mil Private
 - \$0.5mil EU

Next steps

1. Implement aerial surveillance program
2. Increase coordination between WCU, RRU and Bomassa control center in order to intercept wildlife crimes
3. Support strengthening of judiciary
4. Continue major tourism facility and base infrastructure upgrades



Conclusion

Since the creation of the Nouable Ndoki Foundation in 2015, NNNP has focused on increasing capacity, infrastructure and management systems

The greatest impact of the NNF has been our ability to substantially increase law enforcement efforts through the increase of the patrol force (7 fold), installation of new advanced posts, the creation of a RRU, WCU and control room, and more sophisticated training in investigations, operations, and intelligence gathering

Future work will focus on ensuring proper application of the law in the courts



**Wildlife
Conservation
Society**

Thank You.

estokes@wcs.org - Director, Central Africa