



# ***INVISIBLE CHILDREN***

## Early Warning Network & The LRA Crisis Tracker

Jean de Dieu Kandape



*“We have been forgotten. It’s as if we don’t exist. The government says the LRA are no longer a problem, but I know that’s not true. I beg of you, please talk to others about what has happened to us.”*

-- Traditional Chief from Niangara, DRC  
February 19, 2010

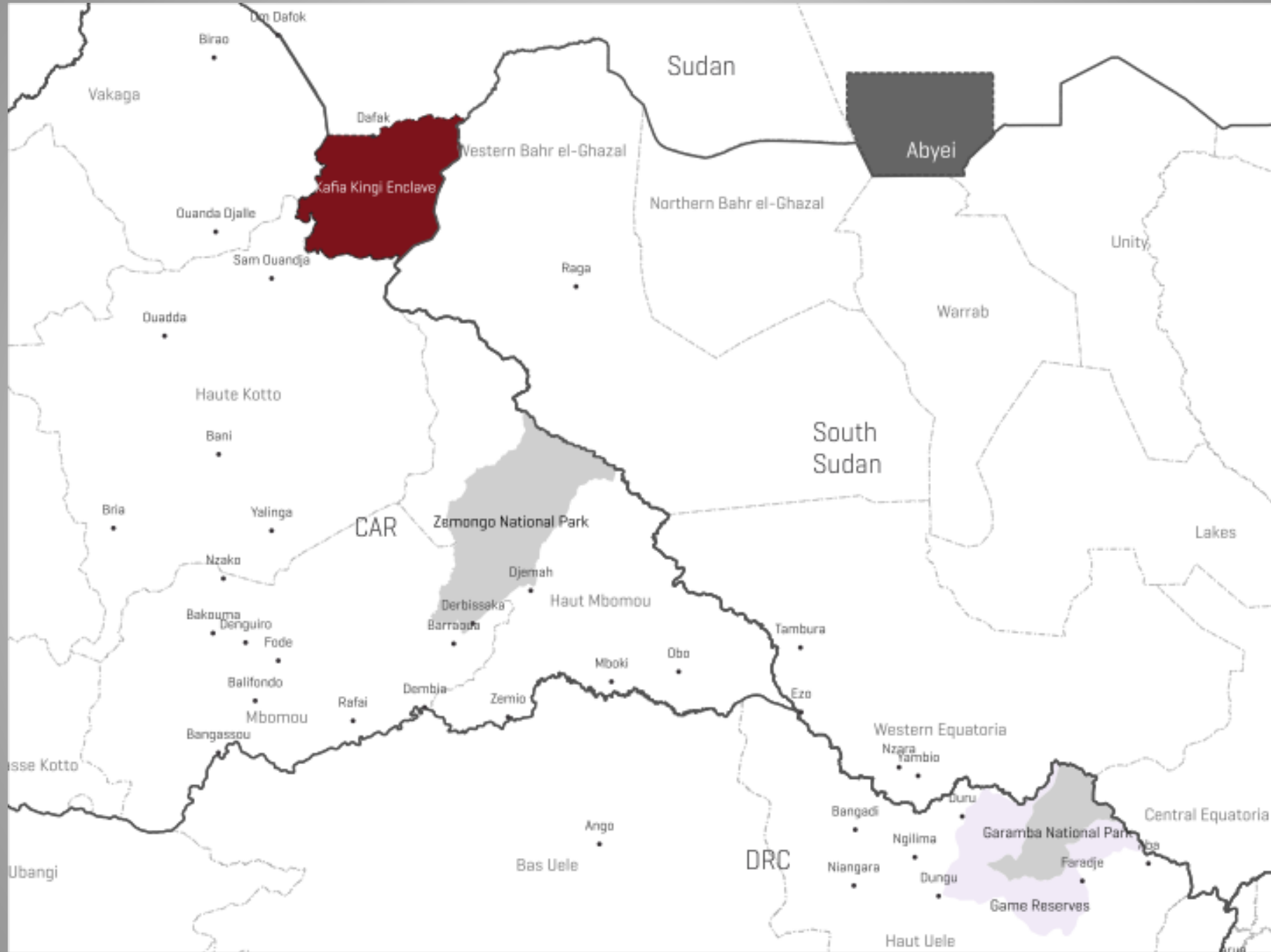




# Invisible Children

- Founded in 2005 with a mission to permanently end LRA violence
- Operational in highly remote areas of central Africa
- Our initiatives include:
  - Community-based protection
  - Security reporting & analysis
  - Defection rebel combatants
  - International political advocacy
- Our work is increasingly addressing insecurity and exploitation beyond the LRA (including poaching)











# Early Warning Network

- Built upon an **existing local network** run by Catholic Church
- Designed to address the **severe isolation** between communities
- Became a way for communities to **talk to the “outside world”**
- Now a “**vertically-integrated pipeline**” of information and analysis





# How It Works

- **High frequency (HF)** two-way, long range radios
  - Communicate via a shared frequency
  - Multiple radios can communicate at once
- Managed by **Local Protection Committees**
  - Diverse spectrum of community volunteers.
  - Includes at least 2-3 HF radio operators
  - Trained by Invisible Children & partner organizations
- Requires **thorough training** of community volunteers
  - HF radio maintenance
  - Quality information collection & reporting
  - Contingency planning in the event of security threat







# Scope of the Network

- About **50 communities** across DRC and CAR.
- In CAR: Combination of HF radios **and satellite phones** due to insecurity and logistical difficulties
- Currently expanding further into **Haute Kotto CAR, and east of Garamba Park**
- Would like to add more radios in the **Bas Uele area of DRC** (Bili Uele forest)







# Early Warning Reports

- Incidents reported during **twice-daily security calls**
  - All communities on the call hear each report
- Reports aggregated by **hub radio operators**
  - Hub operators clarify and document all reports
  - Morning calls are usually the initial incident reports.
  - Afternoon calls provide additional information and updates.
- Hub operators send reports to **Crisis Tracker analysts**
  - Actionable reports immediately shared with security actors in the field (Military, Park Rangers, Peacekeepers)
  - All vetted reports are translated, shared via **an EWN listserv**



# Early Warning Reports

- Step 1: Incidents reported during **twice-daily security calls**
- Step 2: Reports aggregated by **hub radio operators** in DRC and CAR
- Step 3: Hub operators send reports to our **team of analysts**
- Step 4: Vetted reports are distributed daily via our **EWN listserv** and the **LRA Crisis Tracker**.



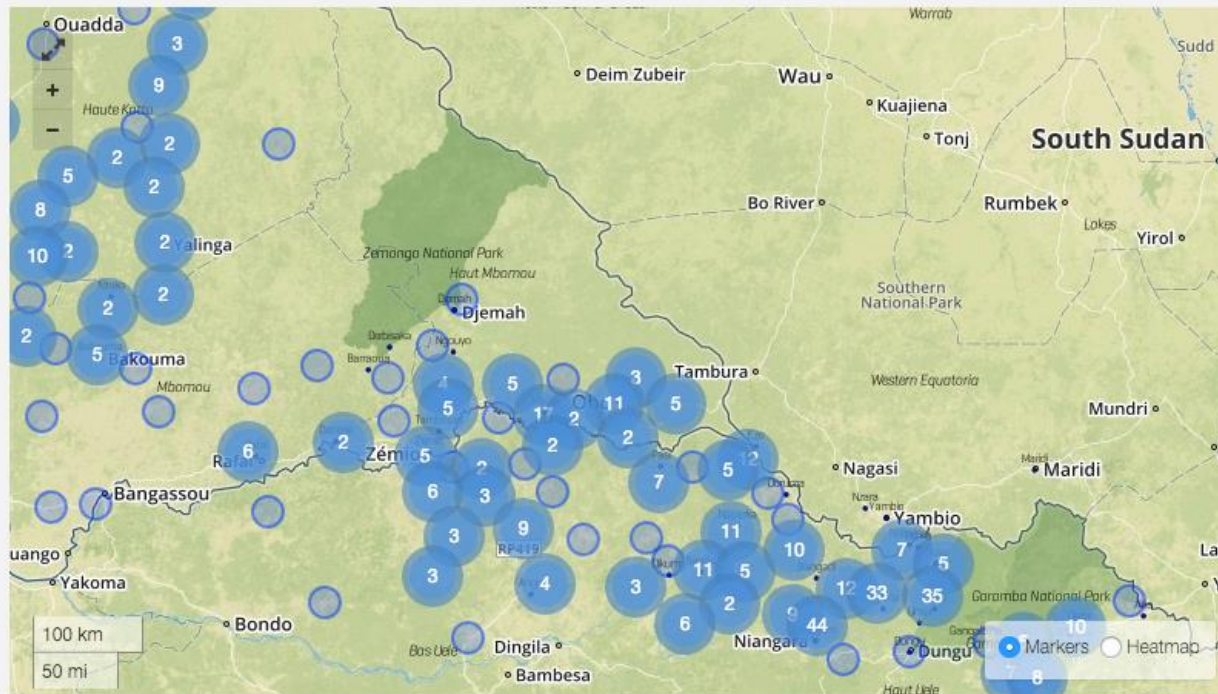






- Database | Online Mapping Platform | Analysis Publications
- The Core Team:
  - HF Hub in the field level
  - Project Coordinator based in the field
  - 3-4 analysts stationed internationally
- Designed to inform policymakers and practitioners.





460

Total Incident Reports

30

Total Civilian Fatalities

1519

Total Civilian Abductions

**LRA Attack** February 29, 2016 | Gongolo, Haut Uele, DRC

2 motorcyclists were looted by 5 LRA forces near Gongolo, DRC. The assailants looted rice, peanuts, phones, money and other non-food items. The assailants wore military clothing, 4 of them were armed with AK-type weapons while the 5th assailant had a gun.

Verification Rating: 3 LRA Verification Rating: Low

**LRA Attack** February 27, 2016 | Bulumasi, Bas Uele, DRC

6 civilians were looted and abducted by LRA forces near Bulumasi, DRC. The assailants reportedly spoke Sango, Zande, Lingala and Acholi.

Verification Rating: 4 LRA Verification Rating: Medium

**Stream** LRA Violence Against Civilians

Attacks, killings, and abductions committed against civilians by the LRA.



## Filter

PRIMARY ACTOR:	Lord's Resistance Arm ▾
ATTACK TYPE:	All attacks ▾
KEYWORD:	Keyword
START DATE:	2014-01-01
END DATE:	2016-03-08
COUNTRY:	All countries ▾
REGION:	All regions ▾
COMMUNITY:	Community ▾
SEARCH RADIUS:	ex: 20 km

## Export

[Download CSV](#)



# Supporting Wildlife Protection

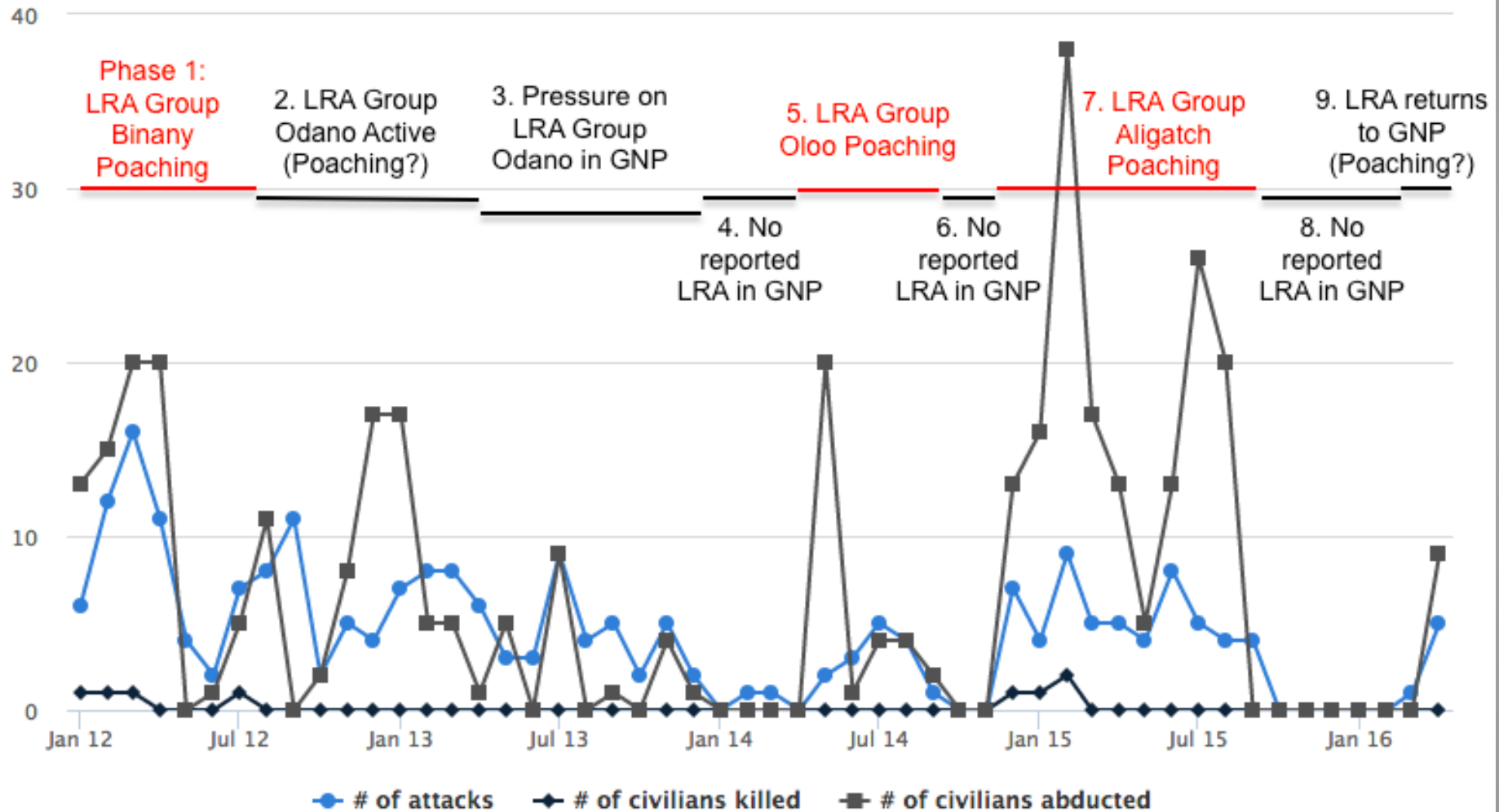




- The LRA is a poaching actor in DR Congo and uses ivory trafficking as a means to sustain itself
- Communities report poaching information over the Early Warning Network
- The armed groups that pose the greatest threat to human security in the region are all engaged in poaching and wildlife trafficking as a source of revenue which funds more violence



# Correlation of LRA poaching & violence against civilians in Garamba, DRC (2012-2016)



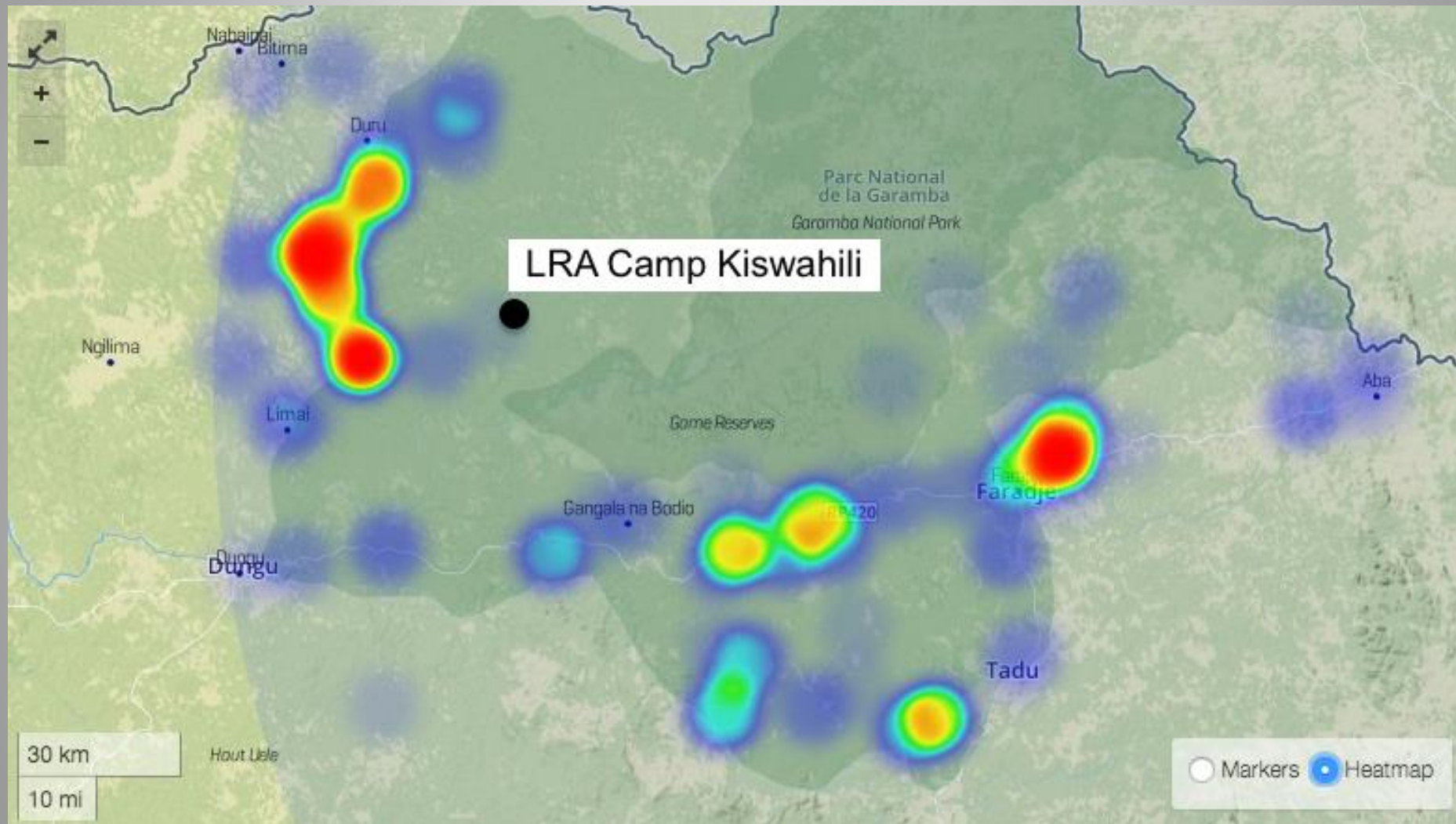




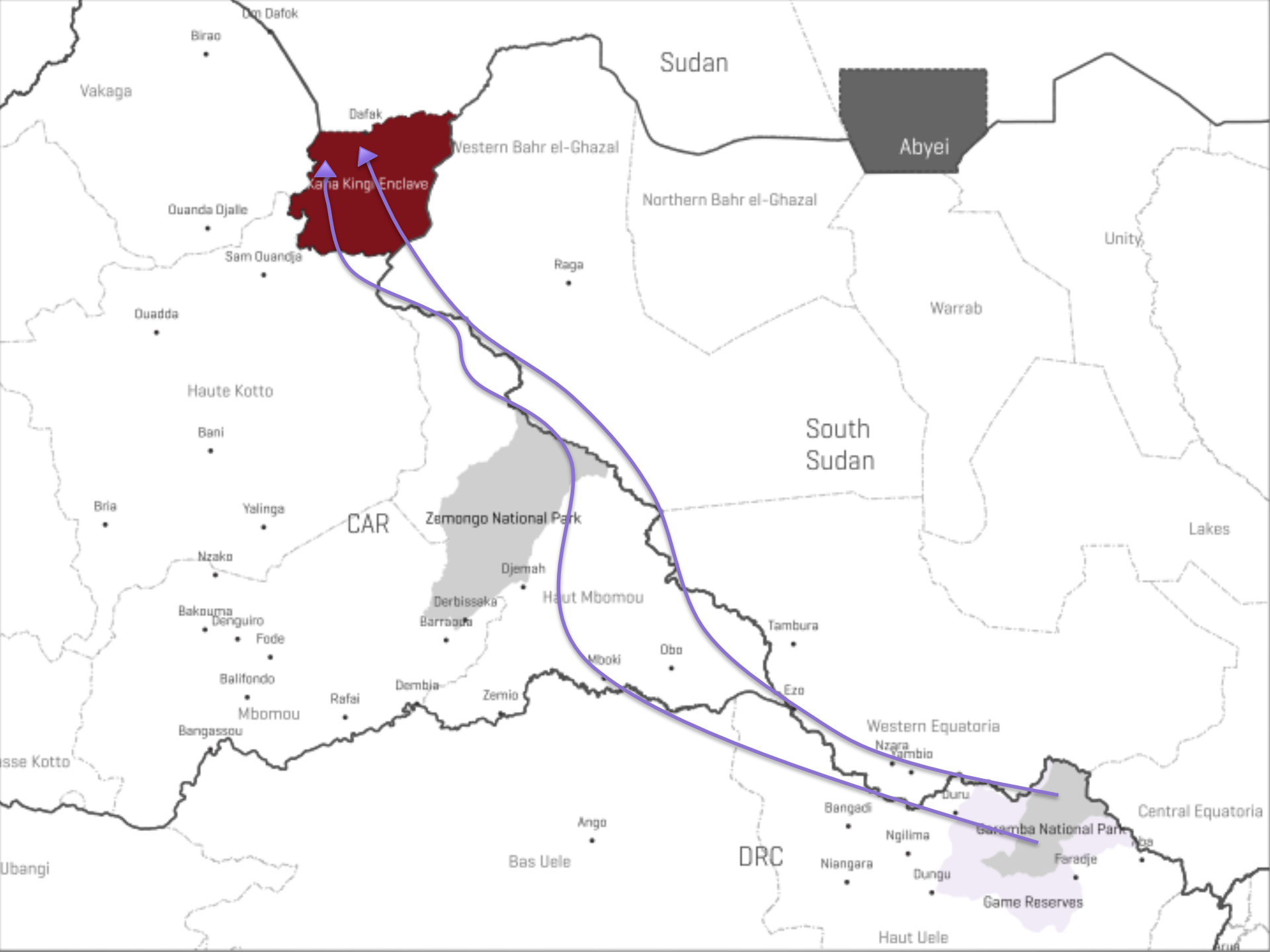


# Map of LRA Attacks in Garamba Park Vicinity

## January 2012–April 2016









# Cross-Cutting Best Practices

- Community Participation
  - Requires trust and buy-in.
  - Self-selected, diverse community mechanisms
- “Vertical Integration” of Information
  - “Low-tech” context-appropriate communications infrastructure + “high tech” analysis platforms
  - Have a presence at every level
- Information-sharing must be *reciprocal*







# Fin!

Merci beaucoup,  
Asante sana,  
Matondo mingi