



CIDT

Centre for International
Development and Training

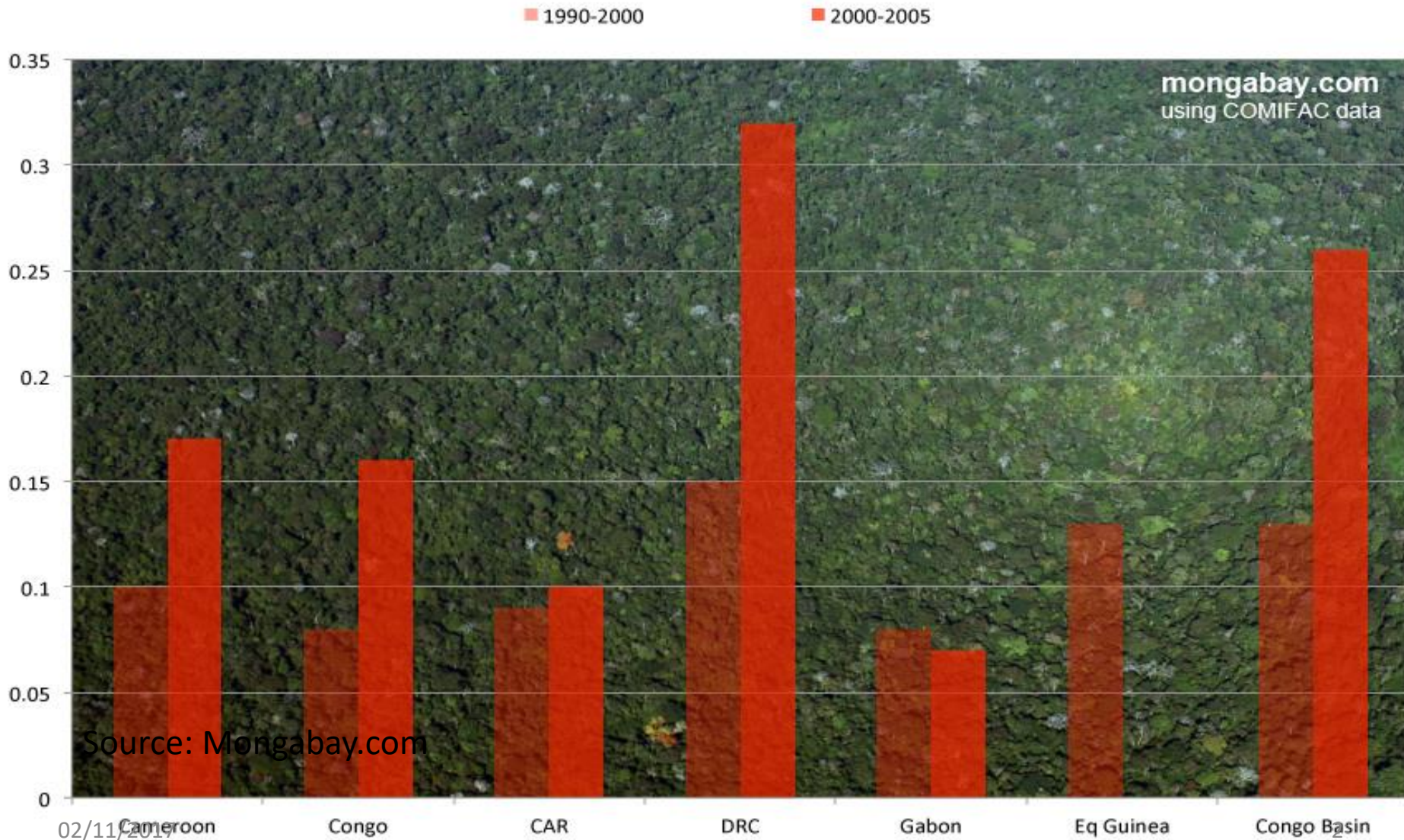


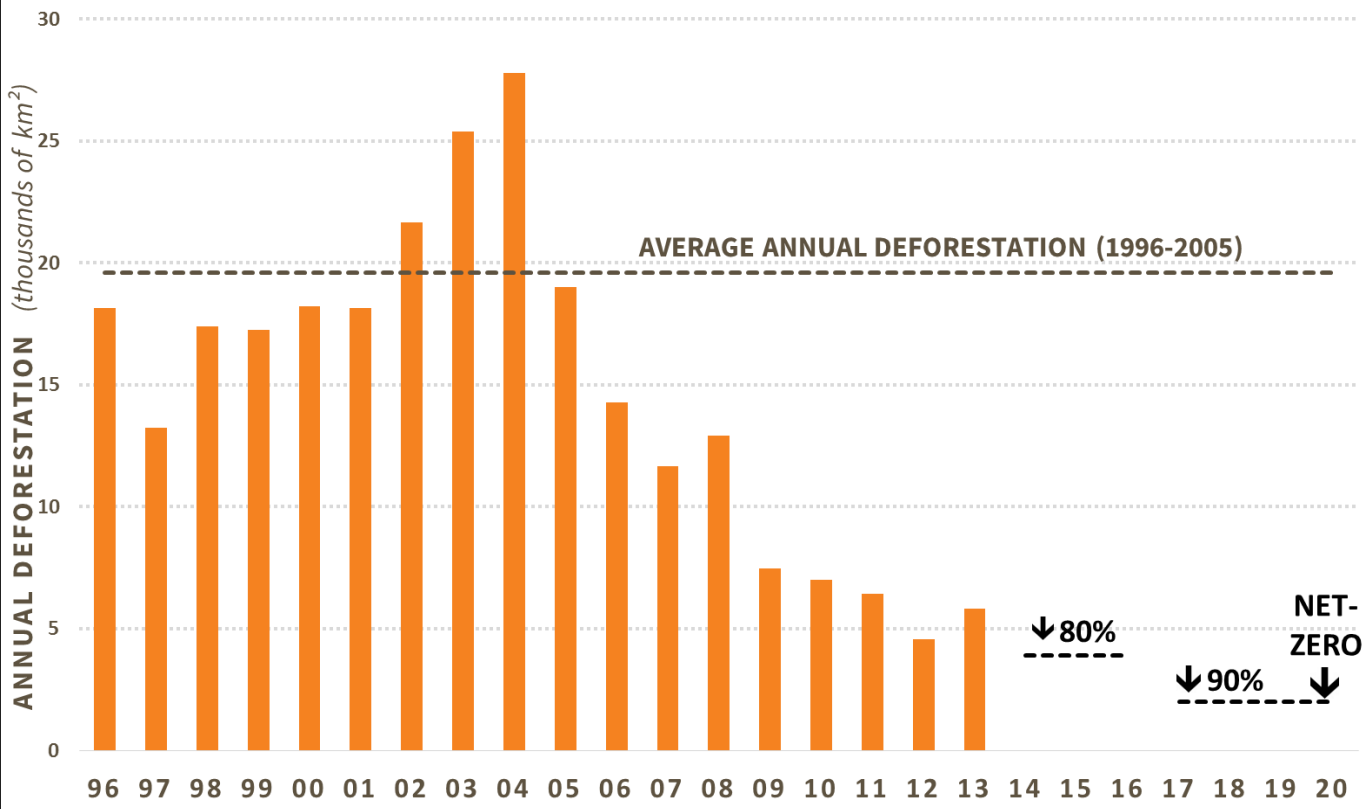
FLEGT WATCH:

Innovative response to global
environmental challenges

Why? — *please add relevant west Africa background*

Congo Basin: Gross annual deforestation (%), 1990-2000 and 2005-2010





Evidence from Latin America

Source: Earth Innovation Institute (2017)

"We need to make sure that we provide the best support to developing countries in their fight against climate change and their efforts to preserve biodiversity while at the same time alleviating poverty" - EU's Joint Research Centre (2012)

"Africa is poised for irreversible change, so it is important to help African countries with tools to monitor what is happening to their forests - Laporte (2007)

Relevance: the EU CV4C Project

Project global objective:

Strengthen the contribution of non-state actors (NSA) – civil society (CS), Indigenous Peoples (IP) and community organisations – to improving forest governance, sustainable forest management and the contribution of forests to development in the Congo Basin

Project specific objective:

Build target NSA capacities to monitor forest governance and forest land use change, inform relevant policy processes and contribute to effective responses from law enforcement and policy making agencies in five Congo Basin countries.

What is FLEGT Watch

- Flegt Watch is a participative portal on which MOs will have access and collaborate on independent forest monitoring
- Flegt Watch is a client server application which will provide relevant and **real time data** land use and forest cover change
- MOs will be able to upload and modify documents relating to their area of interest

How will FLEGT Watch work

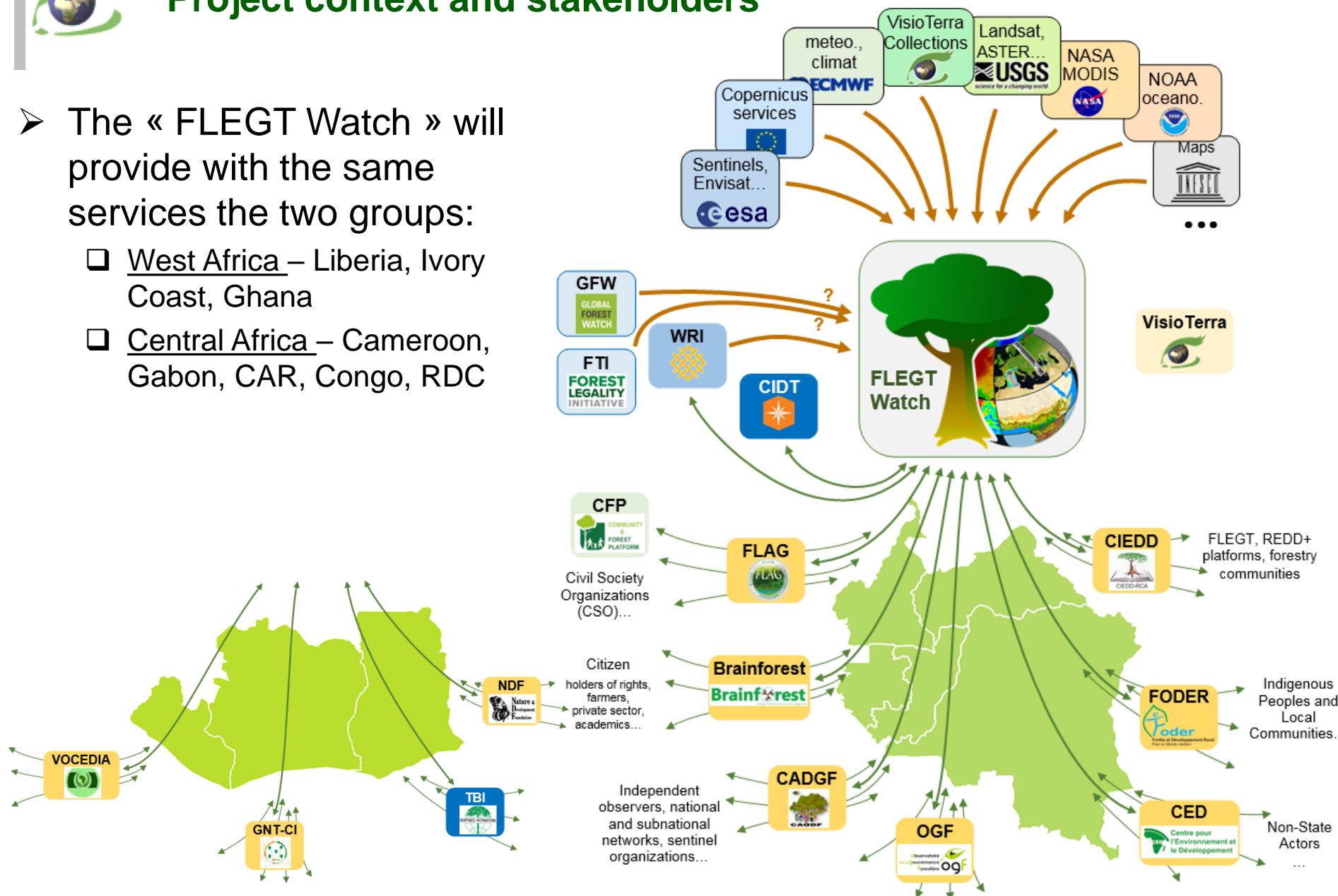
- FLEGT Watch will help stop illegal deforestation before irreparable damage is done through a system of alerts which allow independent forest monitors to act fast and investigate on going cases of illegality
- FLEGT Watch will work through participatory observation: it will allow citizens and users to collect, upload and share context specific monitoring information (complaints, pictures, video, administrative documents) to the global platform;
- FLEGT Watch will build ownership: by ensuring participation of all key stakeholders in decision making around forests and forest use.
- Key stakeholders will be trained on using the platform in order to guarantee autonomy and sustainability beyond the project.



Project context and stakeholders

➤ The « FLEGT Watch » will provide with the same services the two groups:

- ❑ West Africa – Liberia, Ivory Coast, Ghana
- ❑ Central Africa – Cameroon, Gabon, CAR, Congo, RDC





Impact/Added Value for IFM

- ❑ access to data - by guaranteeing "citizens' rights to access to information on the forest sector" (these rights will be better guaranteed if the data are free, such as the Copernicus Sentinel data),
- ❑ participative observation - enabling users / citizens to upload documents, contribute to the updating of socialized information, post a complaint (TBC),
- ❑ ownership - involving all the concerned parties, training them and providing them with the means of empowerment,
- ❑ common platform - provide a single point of entry to -federate cooperation between all parties, -provide an unified spatial referential, -ensure the visibility and transparency of shared data, -enable a multi-layered visualization of data from heterogeneous platforms...
- ❑ increase the performance of field missions - by helping to select and precisely define field missions, allowing a better choice and dimensioning of the ordering of non-free data,
- ❑ give credibility with irrefutable evidence - assisting users in the detection of changes, assessing and quantifying observed changes, enabling the consultation of archives data, enabling events to be retrieved according to spatial / temporal / thematic criteria,
- ❑ disseminate data - by providing simple means to show / report an anomaly detected through predefined channels (EU, press, WRI / GFW, WRI / FTI ...) and / or between participants.